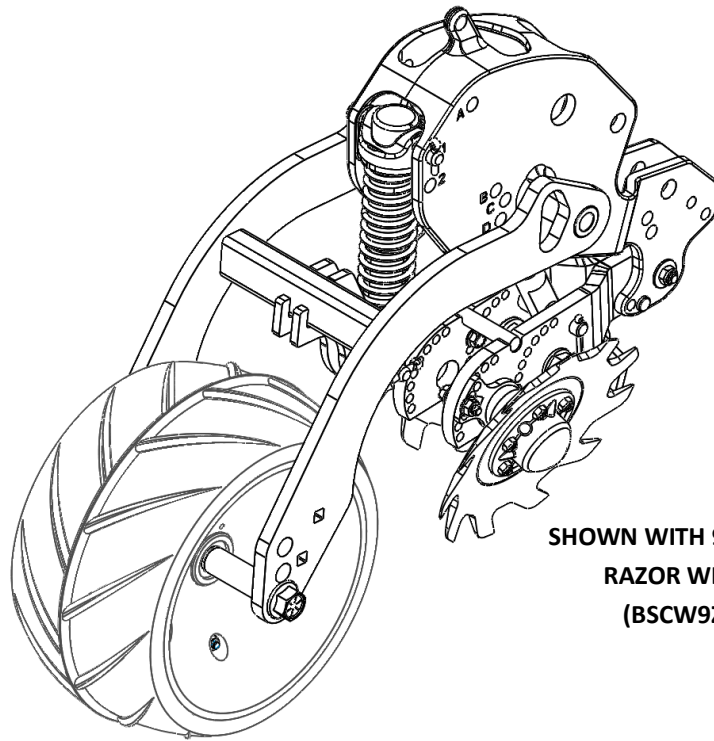


CNH 2000 V-STYLE **CLOSING KIT**

2024 INSTALLATION INSTRUCTIONS



SHOWN WITH 9" CUPPED
RAZOR WHEELS
(BSCW9ZCS)



Martin Planter Attachments

Martin Industries LLC

206 Elk Fork Road

Elkton, KY 42220

Telephone: 270-265-5817

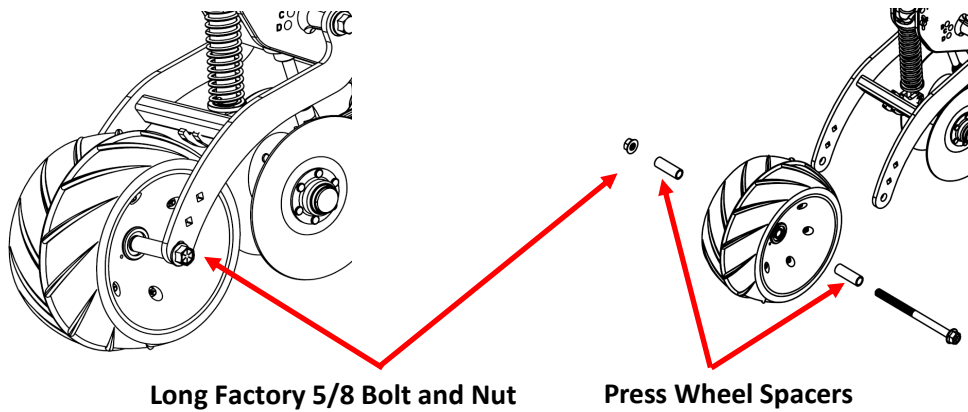
E-Mail: martin@martintill.com

www.martintill.com



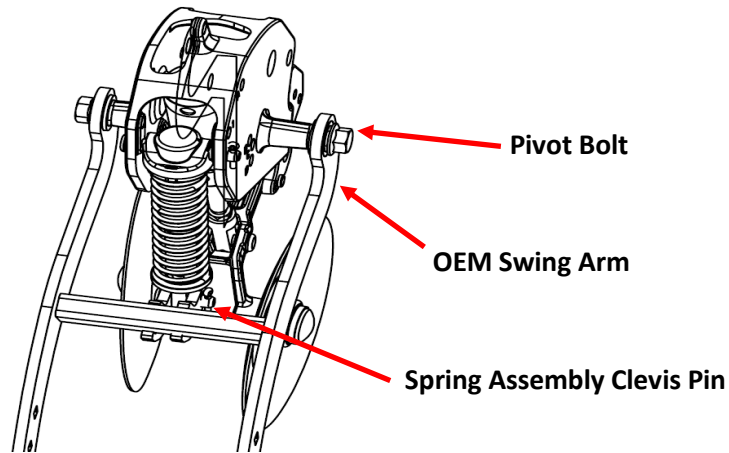
STEP 1 :REMOVE THE PRESS WHEEL

Remove the press wheel from the Factory Swing arm. Retain the bolt, spacers and lock nut for later use.



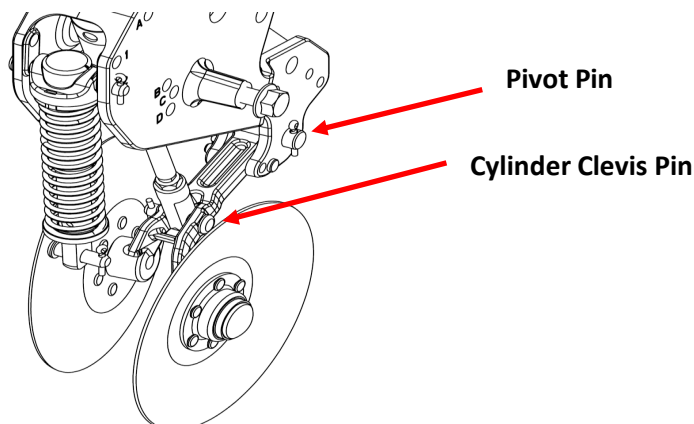
STEP 2 : REMOVE THE FACTORY SWING ARM FROM THE UNIT

- 1) Remove the clevis pin from the spring assembly .
- 2) Remove factory swing arm by removing pivot bolts. Place to side for installation of new Swing Arms.



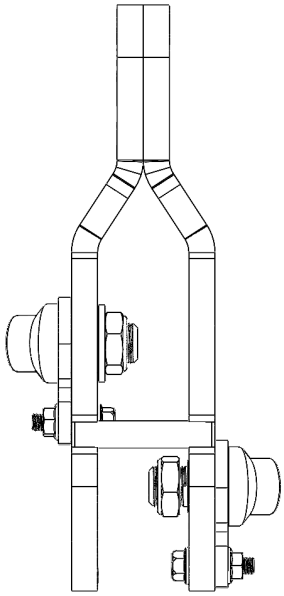
STEP 3 : REMOVE THE CLOSING SYSTEM

- 1) Remove pivot pin from closing wheel arm and pin from end of cylinder Rod.

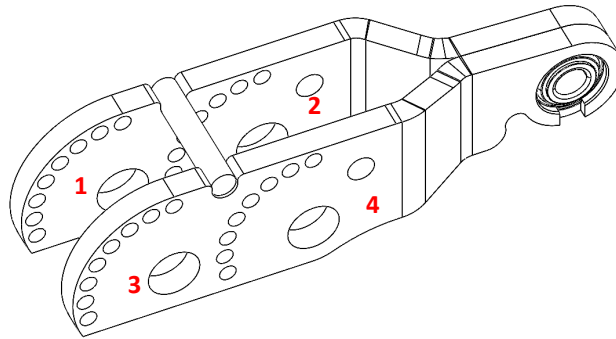


STEP 4 : CHOOSE THE DESIRED AXLE ORIENTATION

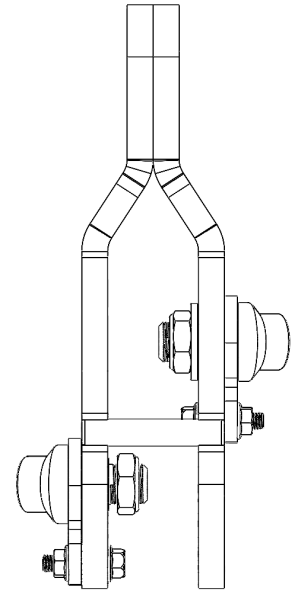
Skip to Step 7 if axles and rock guard were preinstalled at



Left Leading
(Top View)



NOTE: We recommend staggering axles (either 1&4 (RH Leading) or 2&3 (LH Leading)).



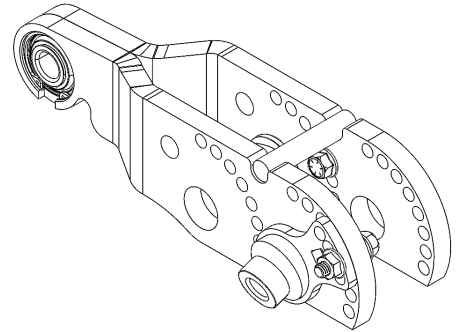
Right Leading
(Top View)

OPTION A : STAGGERED - RIGHT LEADING (LEFT HAND TRAILING)

ONE AXLE IN THE REAR HOLE (Hole number 1)

ONE AXLE IN THE FRONT HOLE (Hole number 4)

NOTE: Recommended Configuration for half of planter

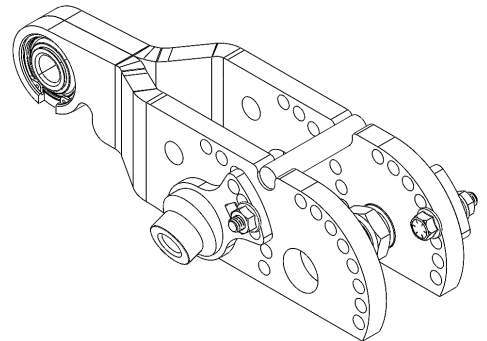


OPTION B : STAGGERED - LEADING LEFT (RIGHT HAND TRAILING)

ONE AXLE IN THE REAR HOLE (Hole number 2)

ONE AXLE IN THE FRON HOLE (Hole number 3)

NOTE: Recommended Configuration for half of planter



Side by Side Configuration is not recommended in any conditions. (Wheels in 1 and 3 or 2 and 4.)

STEP 5 : ASSEMBLE AXLES TO CLOSING FRAME

With Axle configuration decided upon, it is recommended that you start with axles and levers installed in the Neutral Position with the flat of axle and lever parallel with bottom of Frame.

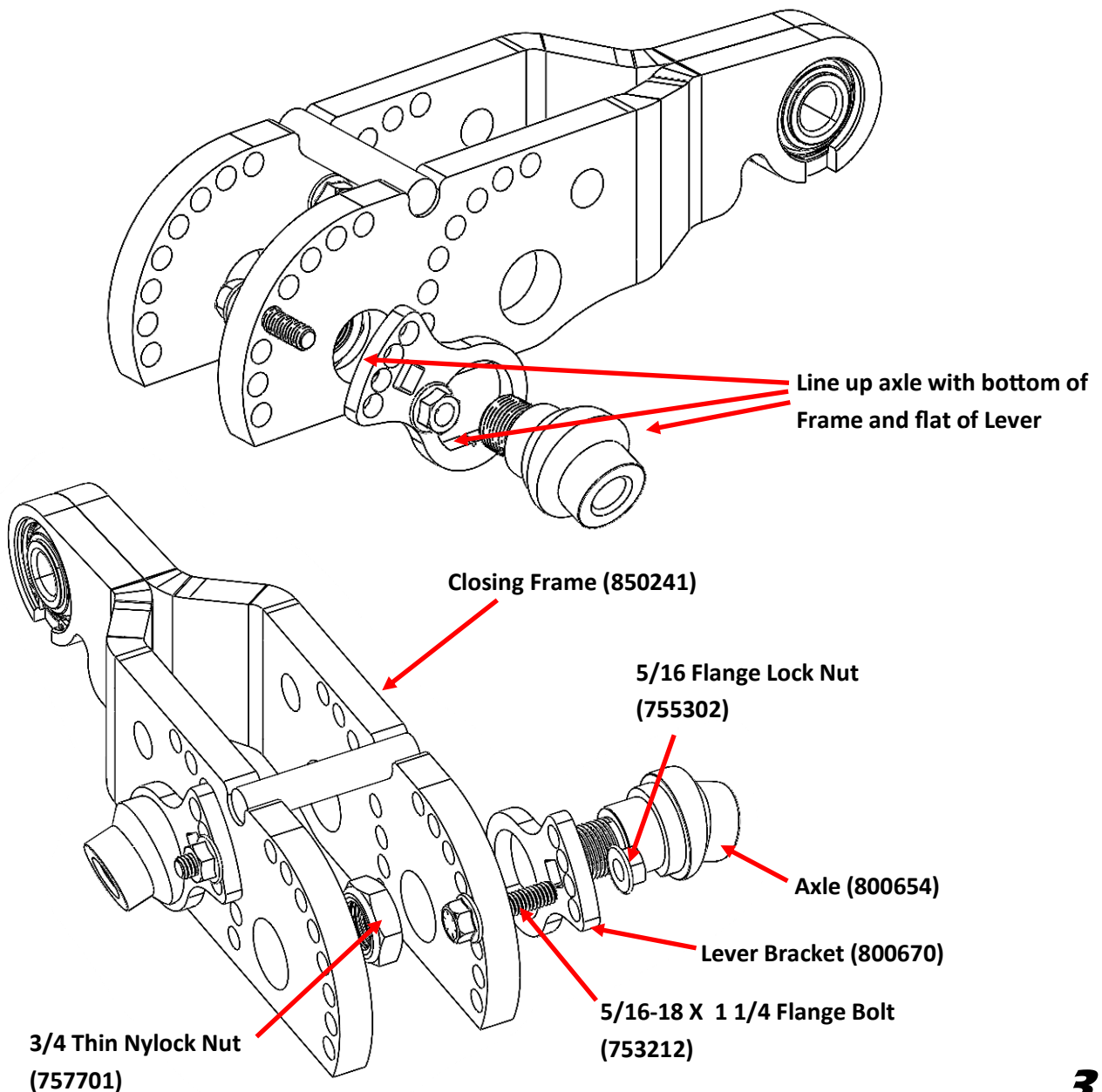
Install 5/16 x 1 1/4 Flange bolt in the fourth hole up on the frame and second hole on the lever for Neutral position.

Insert the Axle threads through the Closing frame hole and fasten with provided 3/4 SAE Washer and 3/4 Thin Nyloc Nut (787701).

If installing recommended Rock Guard, follow step 6 after lining up Levers to the Frame.

NOTE: DO NOT OVER TIGHTEN, THE AXLE SHOULD ROTATE WITH SOME RESISTANCE FELT.

Repeat for opposite side.



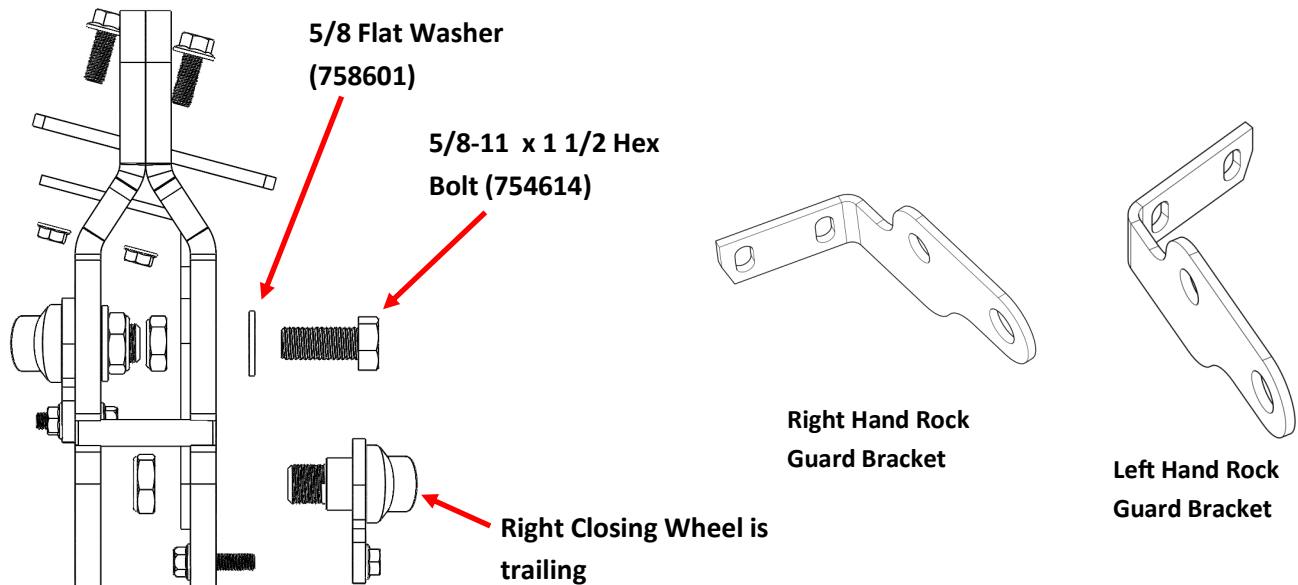
STEP 6 : INSTALLING ROCK GUARD (Recommended)

If not installed from factory, a rock guard can be installed before installing wheels to prevent rocks from wedging between the frame and the wheel.

First, uninstall the trailing wheel and axle, see below example (Right Closing wheel from top is the trailing wheel).

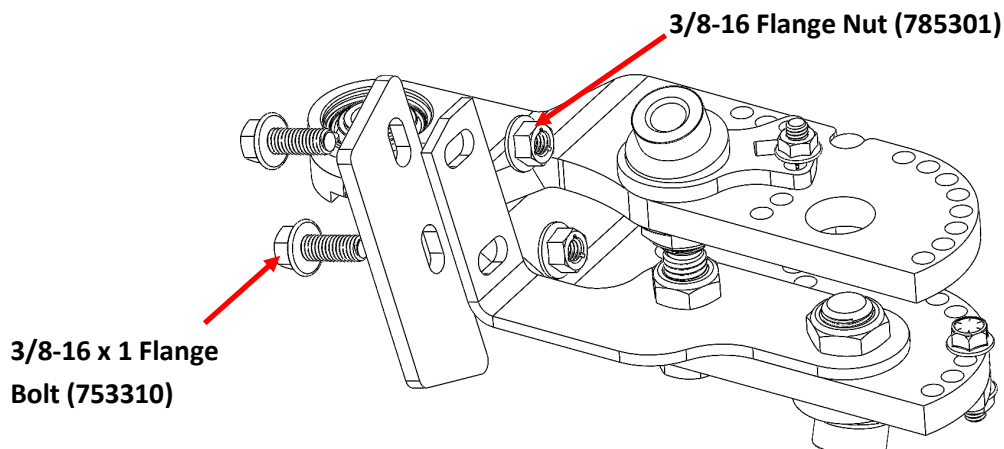
Place the Right Hand rock guard in place of the previously installed washer between the nut and the frame. The dropped down bent portion of the rock guard should be on the bottom of the frame as shown. Washer will not be reinstalled on this side of frame.

Line up the second hole in the rock guard with the empty hole in the Closing Frame, and install using provided 5/8 x 1 1/2 Hex Bolt, 5/8 Washer, and Thin Nylock nut as shown.



To install the rock guard blade, install with the holes offset away from the trailing side, in the example below, the holes are offset to the left with the right wheel trailing on the closing frame. Install using the 3/8 x 1 Flange bolts and flange nuts.

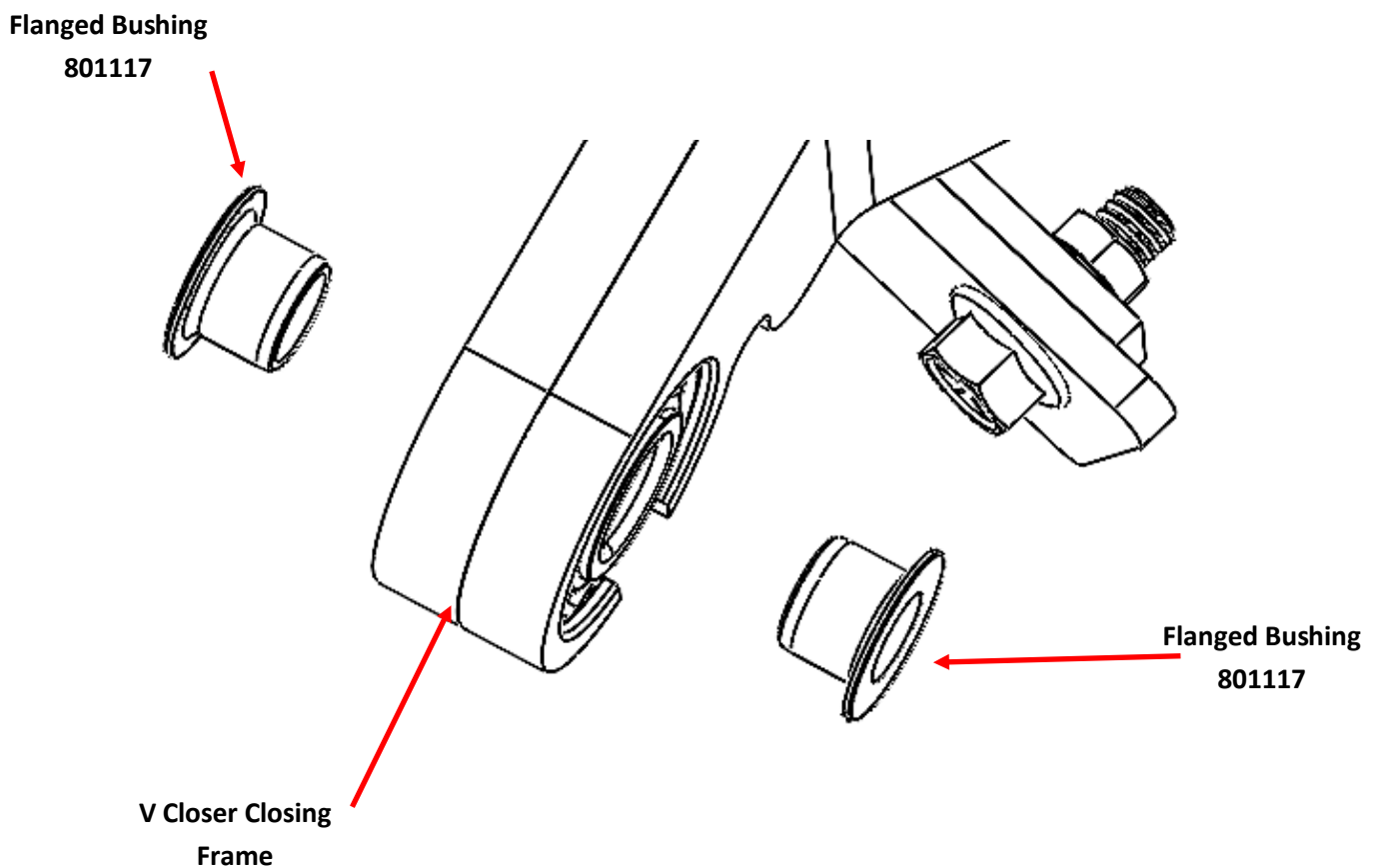
Reinstall the right hand wheel and adjust the blade to fit your closing wheel configuration. Adjusting the toe in of each wheel could cause this blade to need adjustment.



STEP 7 : INSTALL CLOSING FRAME TO CASEIH ROW UNIT

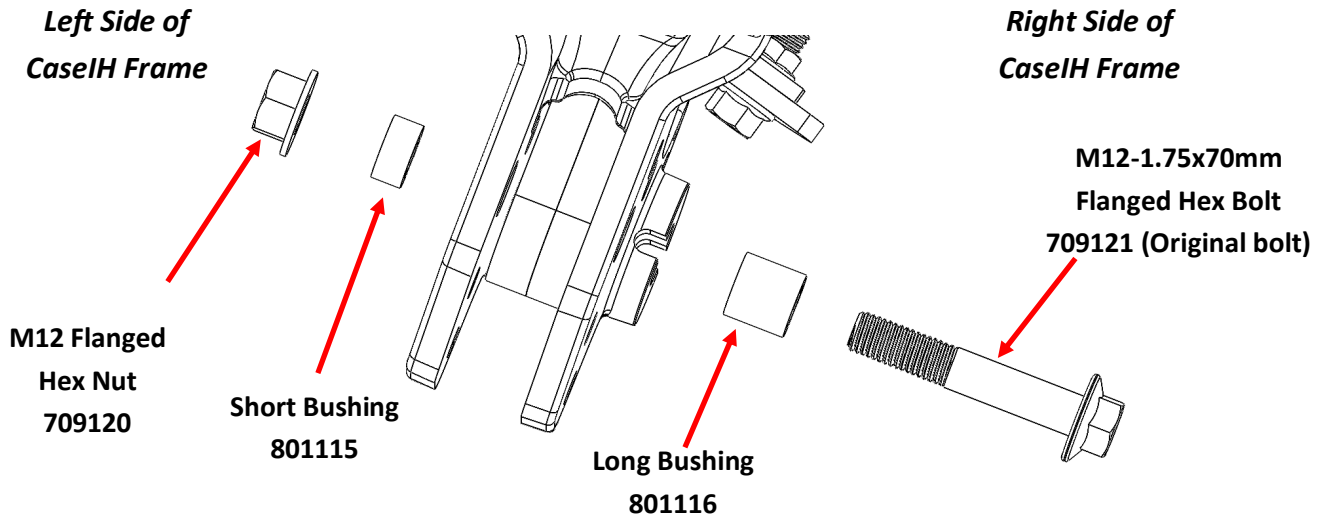
Before installing the Closing Frame Assembly (900365R or 900365L) onto your CaseIH Row Unit, insert Flanged Bushing 801117 into each side of the bearing as shown below. Note there are two different CaseIH castings.

See Step 7A for casting with boss and Step 7B for casting without boss.



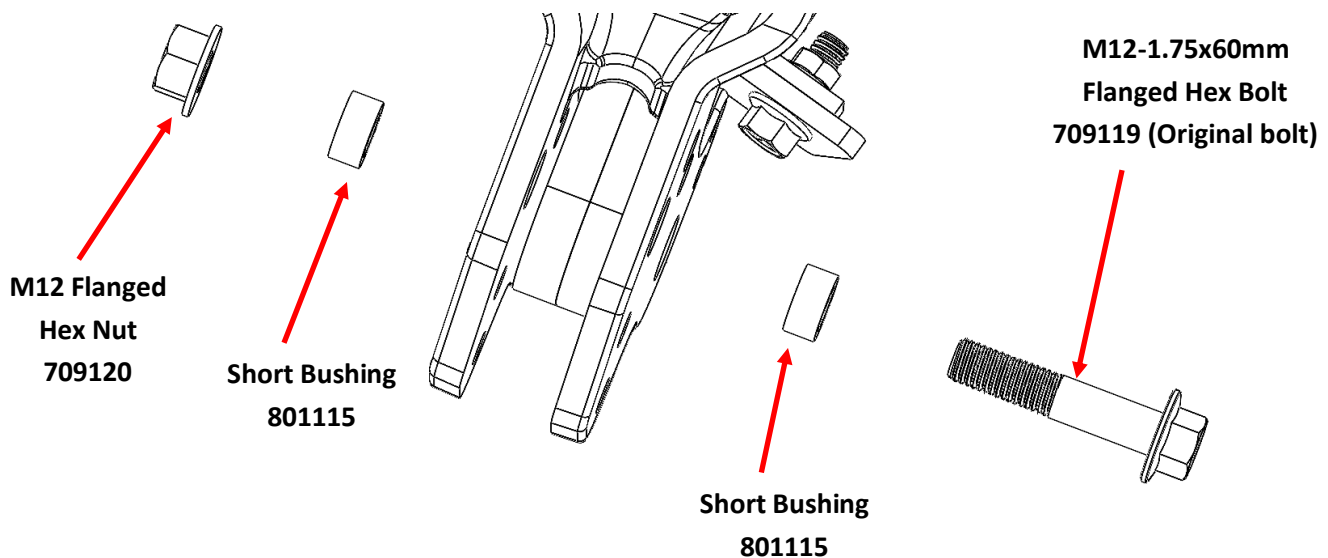
STEP 7A : INSTALL CLOSING FRAME TO CASEIH ROW UNIT

With flanged bushings installed, insert the closing frame between the plates of the CaseIH Row Unit frame as shown. In the Right side of the Case IH frame, insert the long bushing 801116. Use short bushing 801115 on the left side. Mount Closing Frame onto the CaseIH Frame using the original M12 hex flange bolt and provided M12 flange nut as shown below. Torque to 23 ft-lbs.



STEP 7B : INSTALL CLOSING FRAME TO CASEIH ROW UNIT

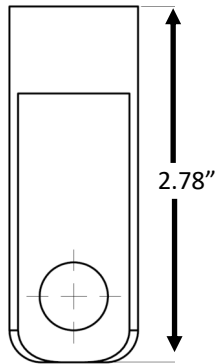
With flanged bushings installed, insert the closing frame between the plates of the CaseIH Row Unit frame as shown. In the insert the short bushing 801115 on both sides as shown. Mount Closing Frame onto the CaseIH Frame using the original M12 hex flange bolt and provided M12 flange nut as shown below. Torque to 23 ft-lbs.



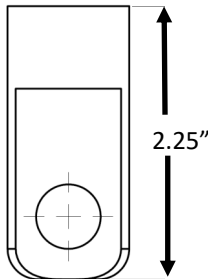
STEP 8 : REINSTALL CYLINDER TO CLOSING FRAME

Determine if you have a long rod end or a short end. If you have a short rod, to use this kit, you will need to upgrade to a long rod end. The below guide illustrates the difference in the rod ends and lists serial numbers for the short rod end models.

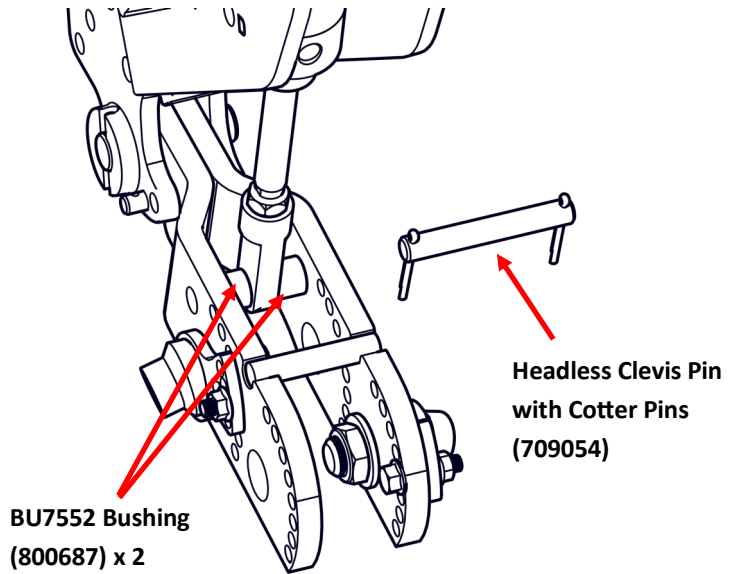
Connect the cylinder to the closing frame using 1 Bushing (BU7552) per side between the closing frame and cylinder rod. Insert 1/2 x 3 Clevis Pin and secure with provided cotter pins.



Long Rod End
Late 2018 and up



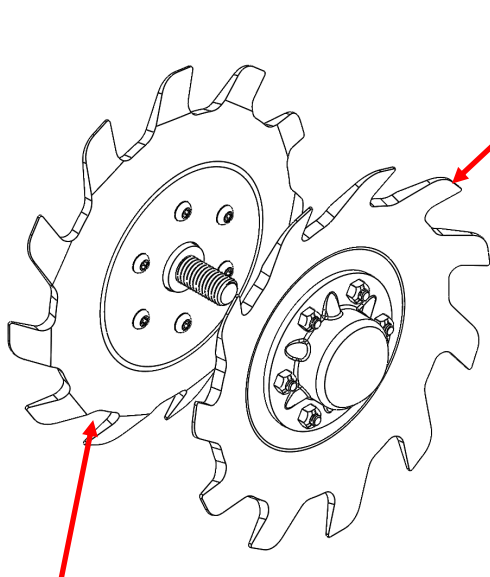
You may have a short rod cylinder if you have early 2018
MY18 S/N: (2140-YJS073638, 2150-12/16R FFT YJS073647)



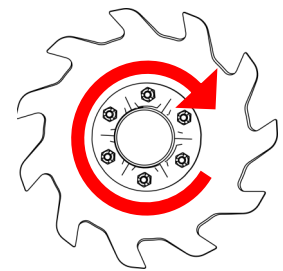
BU7552 Bushing
(800687) x 2

Headless Clevis Pin
with Cotter Pins
(709054)

STEP 9 : INSTALL THE BSCW9ZC-S



Right Hand Wheel
Assembly 900470



Rotation Direction

Left Hand Wheel Assembly 900471

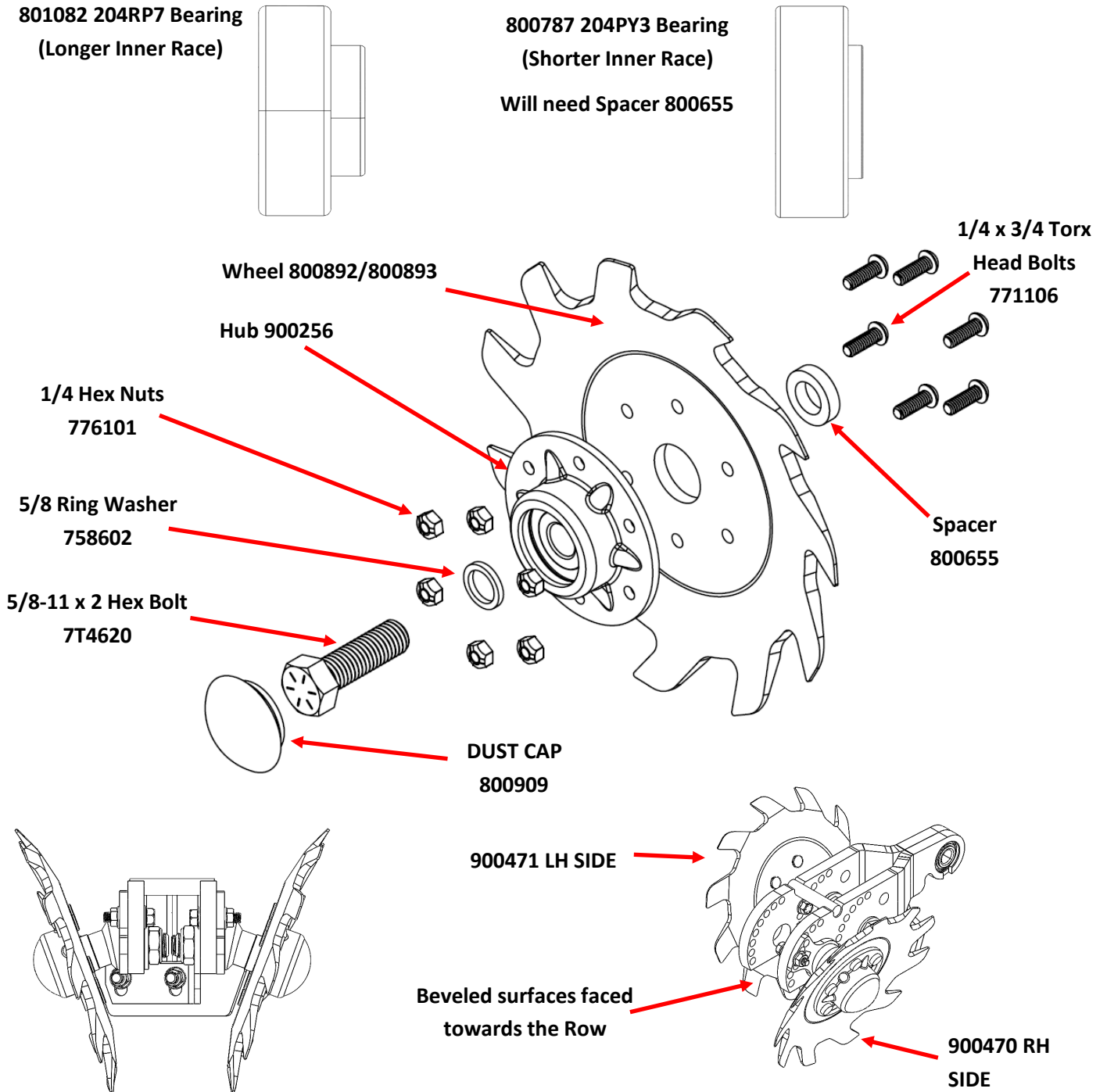
Hardware Provided (Per Row)

- | | | |
|---------------------|----------|-------|
| 1) 5/8" x 2" Bolt | (7T4620) | Qty 2 |
| 2) Spacer | (800655) | Qty 2 |
| 3) 5/8" Ring Washer | (788602) | Qty 2 |
| 4) Cap, Plastic | (800909) | Qty 2 |

BSCW9ZC-S ASSEMBLY INSTRUCTIONS:

- 1) **(Can skip if wheels are preassembled)** Place the 800892/800893 wheel on to the 900256 hub and fasten with 1/4 X 3/4 Torx Head Bolts (771106) and 1/4 Hex nuts (776101).
- 2) Insert the 5/8"-11 bolt thru 5/8 Ring washer, thru 900256 hub, and add spacer (800655) between the axle face and the bearing. 5/8 Ring Washer under head of bolt shown below is in storage position and available for spacing wheels out if desired.

Note: If you received bearing 801082 (204RP7), you will not need 800655 Spacer. See difference below.

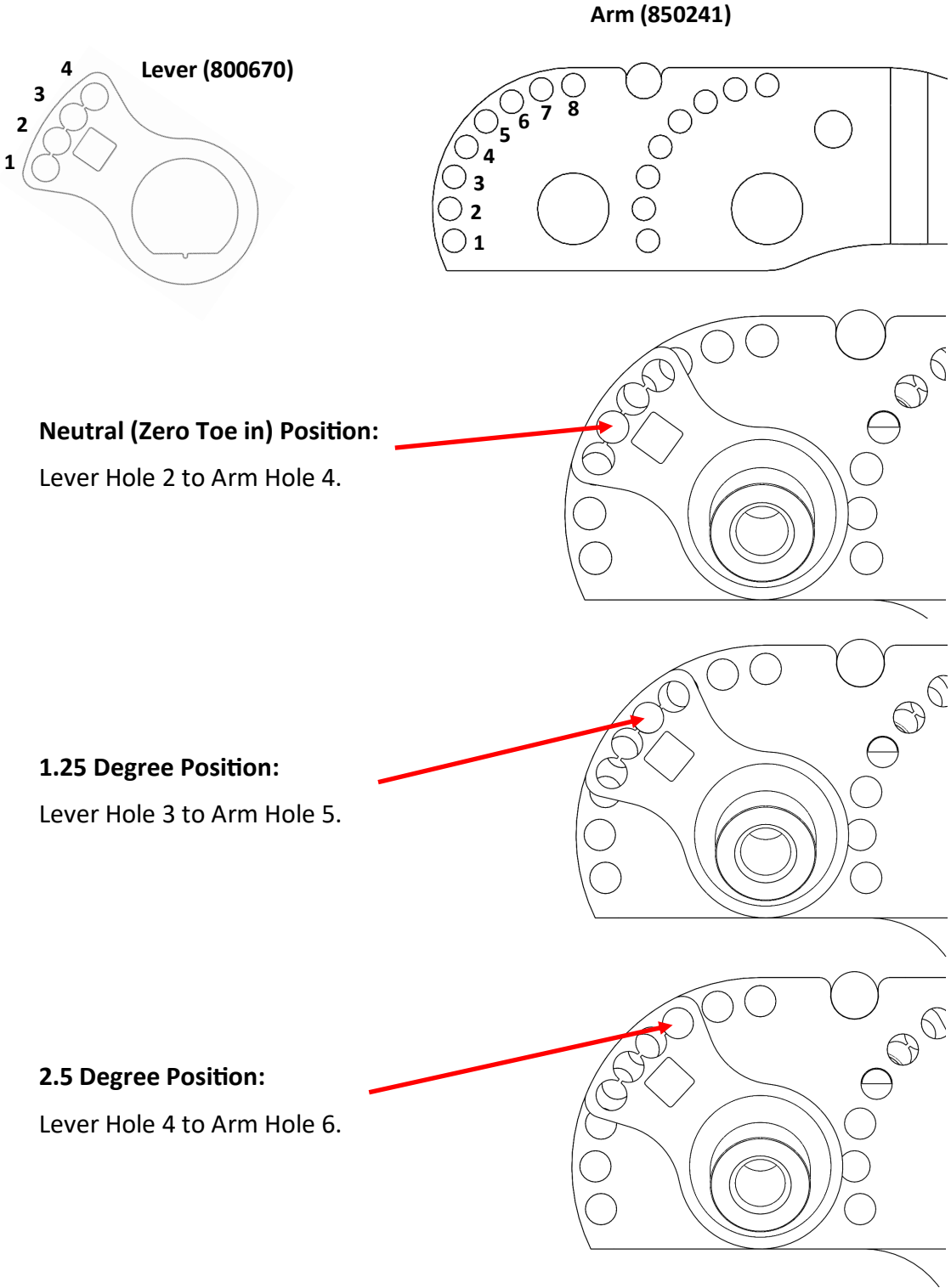


6) Repeat the assembly instructions for the Left hand side/opposite assembly.

STEP 10: ADJUSTING WHEEL TOE-IN

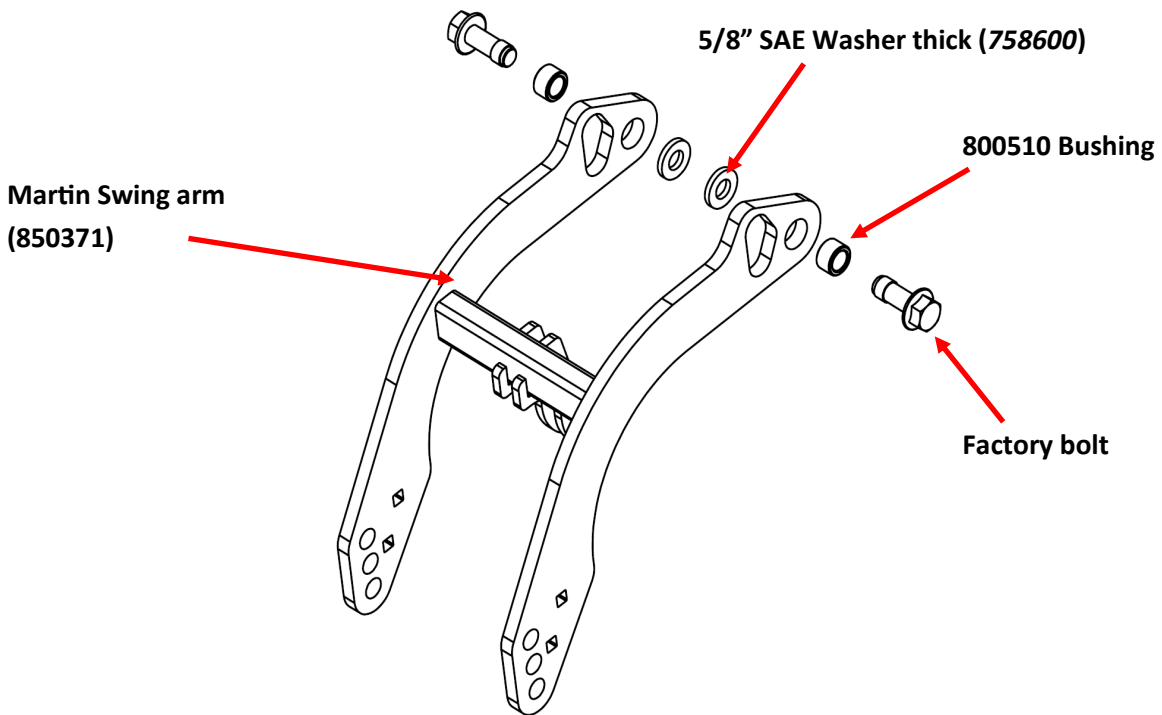
Wheel Toe-in can be adjusted independently on each side providing more flexibility to adjust seed trench closure based on varying soil conditions.

To adjust, remove bolt and nut and rotate the adjustment lever (800670) clockwise or counter-clockwise as viewed below. By alternating bolt in holes in Lever and in the arm, finer adjustments can be made. See below.

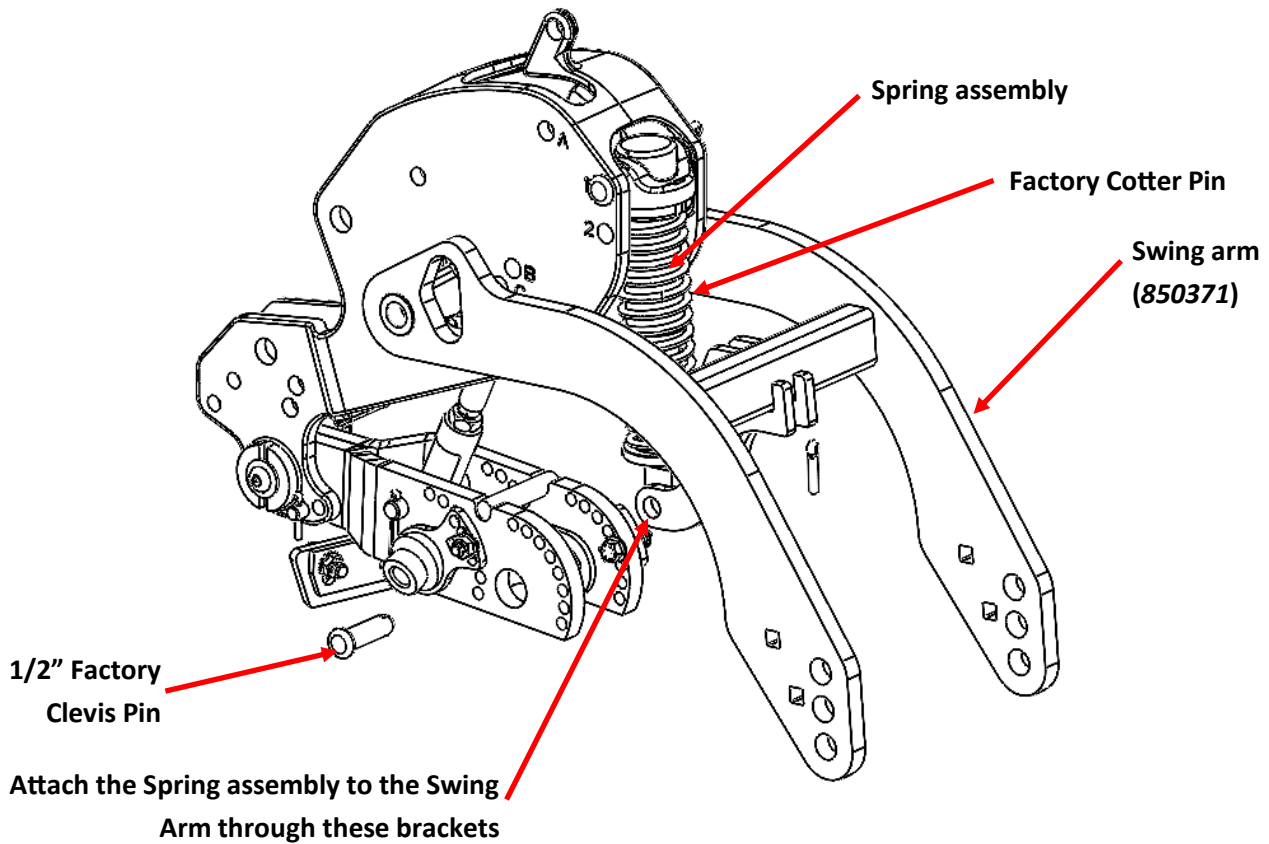


STEP 11 : INSTALL THE SWING ARM

Install new swing arm (if ordered) with provided 800510 Bushing and 5/8 Thick washer as shown below with Factory mounting bolt removed earlier.

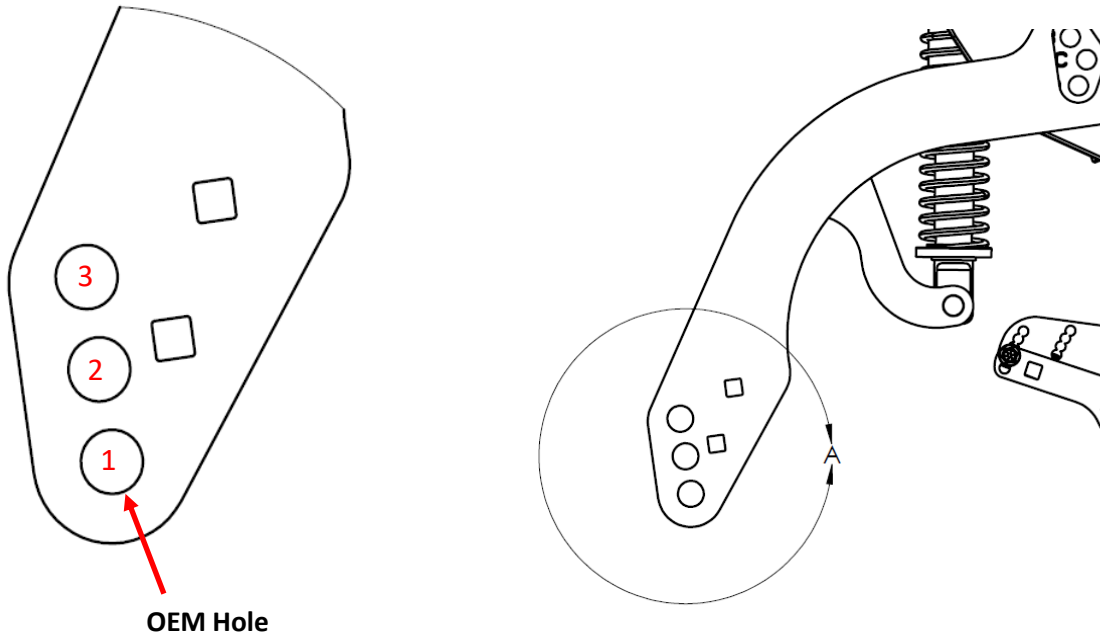


Reattach the factory spring assembly to the (850371) Swing arm by using existing Hardware.



STEP 12 : INSTALL THE PRESS WHEEL

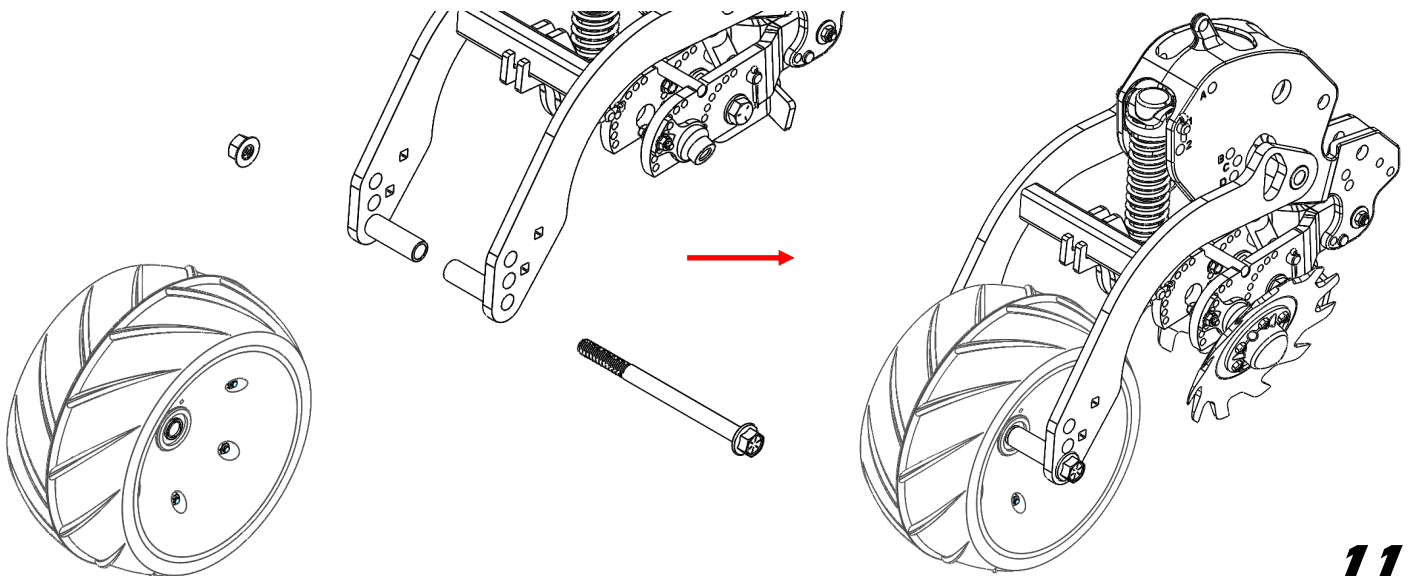
The New Martin Swing arm comes with different wheel arrangements apart from the OEM setup for the wheel



HOLE NUMBER 1 : The Hole number 1 will place the wheel in the **OEM** Location.

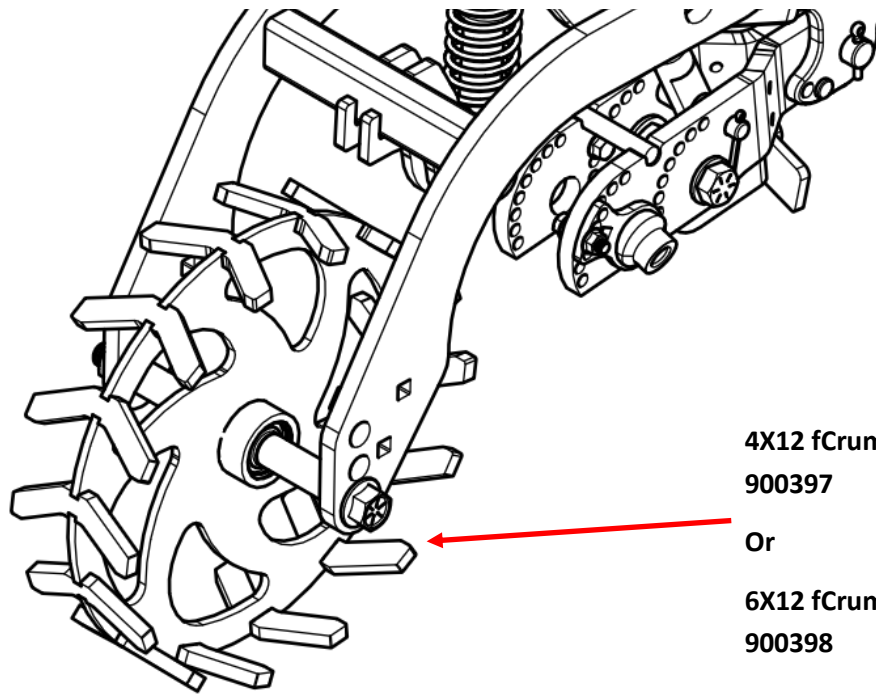
HOLE NUMBER 2 and 3 : The Hole number 2 and 3 can be used to reduce pressure in addition to the spring adjustment.

Once the Hole is determined, aligned the wheel to that chosen hole with the factory spacers on both sides, and the insert the long factory bolt through it and secure the other end with flange nut.



fCrumbler (4x12 & 6x12)

Also available is our fCrumbler 4 x 12 and 6 x 12 Press wheels as shown below. Install with the same spacers and hardware as the factory Press Wheel.

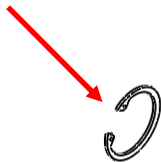


4X12 fCrumbler
900397

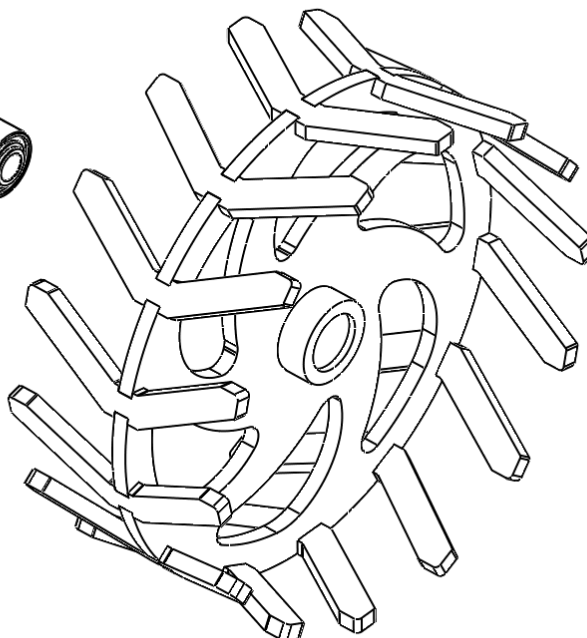
Or

6X12 fCrumbler
900398

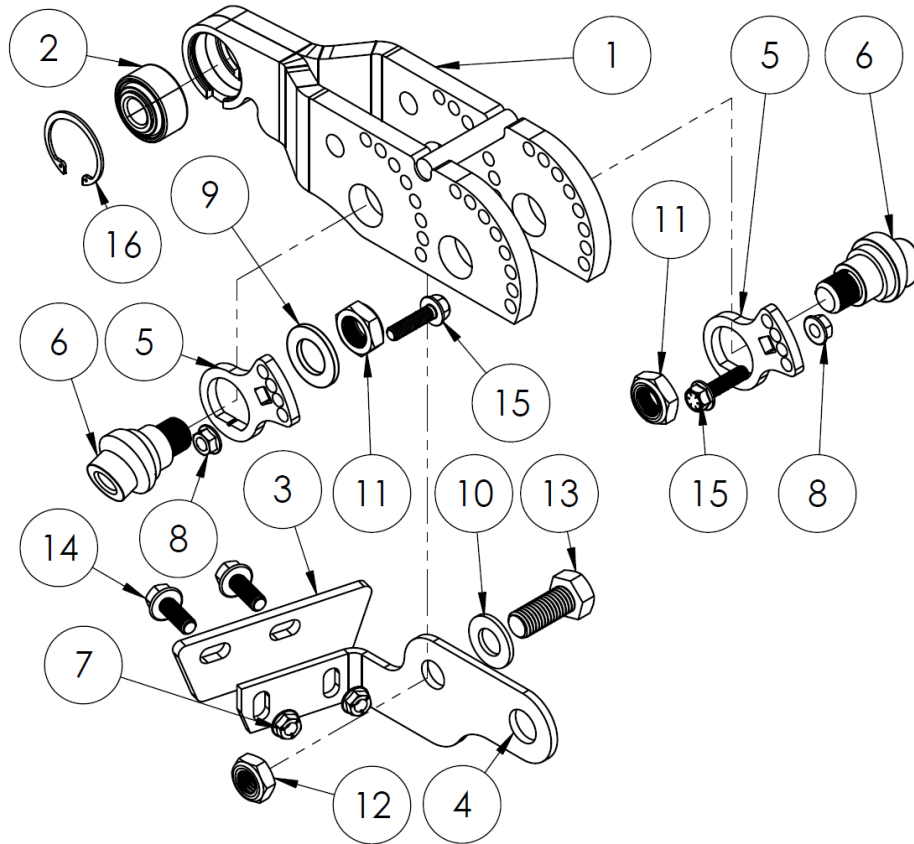
1 9/16 Snap Ring
(709068)



5203KMF Bearing
(800357)

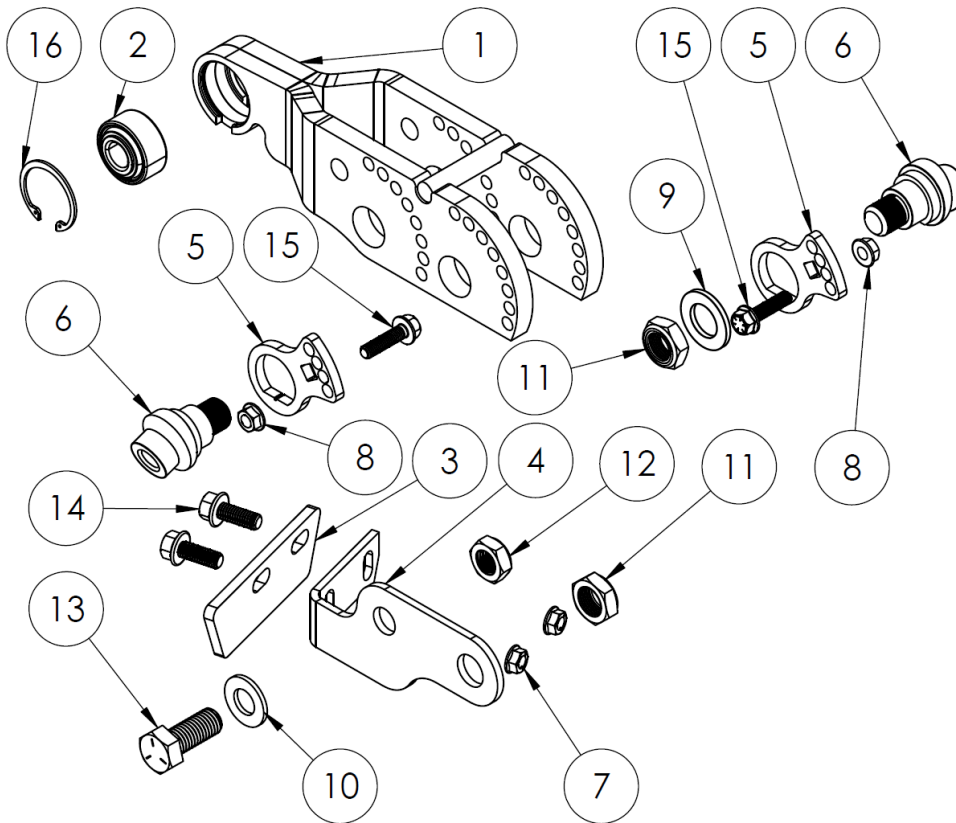


900365R Exploded View



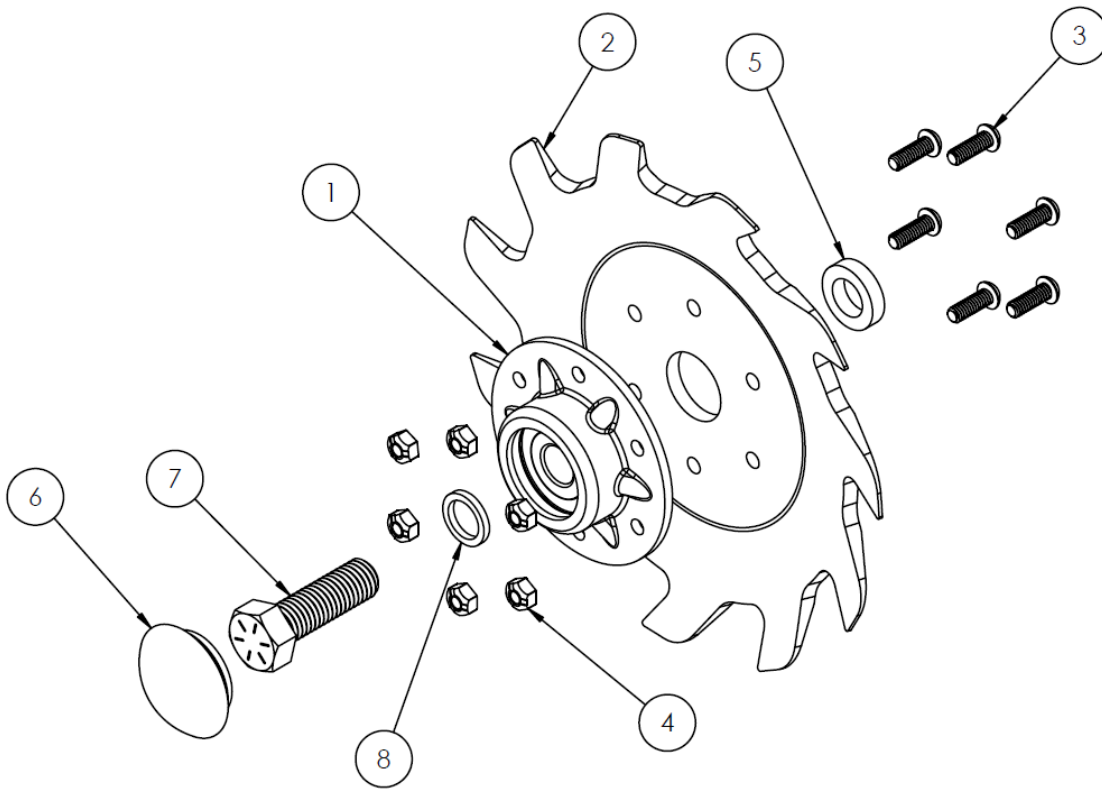
ITEM NO.	PART NUMBER	DESCRIPTION	QTY.
1	850241	FRAME, CNH 2000 V CLOSER	1
2	801087	BEARING, 5203-KYY9 ESQ 40mm O.D X 16.13mm I.D. X 24.46mm INNER RACE LG, 17.46mm OUTER LG SHIELDED DOUBLE LIP SEALS	1
3	800869	PLATE, ROCK GUARD BLADE	1
4	800868	PLATE, RH ROCK GUARD (CNH2000 V STYLE)	1
5	800670	BRKT, LEVER CNH2000 CLOSER	2
6	800654	AXLE, STUB CAMBER ADJUST 20 DEG	2
7	785301	NUT, 3/8-16 FLANGE TRI LOCK ZY	2
8	785201	NUT, 5/16-18 FLANGE TRI LOCK ZY (N516FLN)	2
9	758700	WASHER, 3/4 SAE ZY (W34ZY)	1
10	758601	WASHER, 5/8 SAE 21/32 ID 1/8 THIN ZY	1
11	757701	NUT, 3/4-16 THIN NYLOCK ZY	2
12	757601	NUT, 5/8-11 THIN NYLOC	1
13	754614	BOLT, 5/8-11X1.5 HEX ZY (B5M58NC112)	1
14	753310	BOLT, 3/8-16X1 FLANGE ZY	2
15	753212	BOLT, 5/16-18X1.25 FLANGE ZY	2
16	709068	RING, INTERNAL 41mm HO156	1

900365L Exploded View



ITEM NO.	PART NUMBER	DESCRIPTION	QTY.
1	850241	FRAME, CNH 2000 V CLOSER	1
2	801087	BEARING, 5203-KYY9 ESQ 40mm O.D X 16.13mm I.D. X 24.46mm INNER RACE LG, 17.46mm OUTER LG SHIELDED DOUBLE LIP SEALS	1
3	800869	PLATE, ROCK GUARD BLADE	1
4	800867	PLATE, LH ROCK GUARD (CNH2000 V STYLE)	1
5	800670	BRKT, LEVER CNH2000 CLOSER	2
6	800654	AXLE, STUB CAMBER ADJUST 20 DEG	2
7	785301	NUT, 3/8-16 FLANGE TRI LOCK ZY	2
8	785201	NUT, 5/16-18 FLANGE TRI LOCK ZY (N516FLN)	2
9	758700	WASHER, 3/4 SAE ZY (W34ZY)	1
10	758601	WASHER, 5/8 SAE 21/32 ID 1/8 THIN ZY	1
11	757701	NUT, 3/4-16 THIN NYLOCK ZY	2
12	757601	NUT, 5/8-11 THIN NYLOC	1
13	754614	BOLT, 5/8-11X1.5 HEX ZY (B5M58NC112)	1
14	753310	BOLT, 3/8-16X1 FLANGE ZY	2
15	753212	BOLT, 5/16-18X1.25 FLANGE ZY	2
16	709068	RING, INTERNAL 41mm HO156	1

Exploded View For BSCW9ZC



ITEM NO.	PART NUMBER	DESCRIPTION	QTY.
1	900256	HUB, 204 BEARING AND HUB W SPACER ASSEMBLED (SCW899, SCW9ZC CLOSING WHEELS)	1
2	800893	WHEEL, 9" X 1/4" RAZOR LH 11 TOOTH CUPPED W/O HARDWARE	1
3	771106	BOLT, 1/4-20X.75 TORX BUTTON ZP	6
4	776101	NUT, 1/4-20 TRI LOCK (N14CNL)	6
5	800655	SPACER, 1.06X.625X.250	1
6	800909	CAP, PLASTIC MOULDED (MSH62024) (BSCW_ 9")	1
7	7T4620	BOLT, 5/8-11X2 HEX TAP ZY	1
8	758602	WASHER, 5/8 ID X 7/8 OD RING (W58FYZ)	1

Notes:

Notes:

Notes:



The most trusted name in no-till
Established 1991

Martin Industries LLC

206 Elk Fork Road

Elkton, KY 42220

Telephone: 270-265-5817

E-Mail: martin@martintill.com