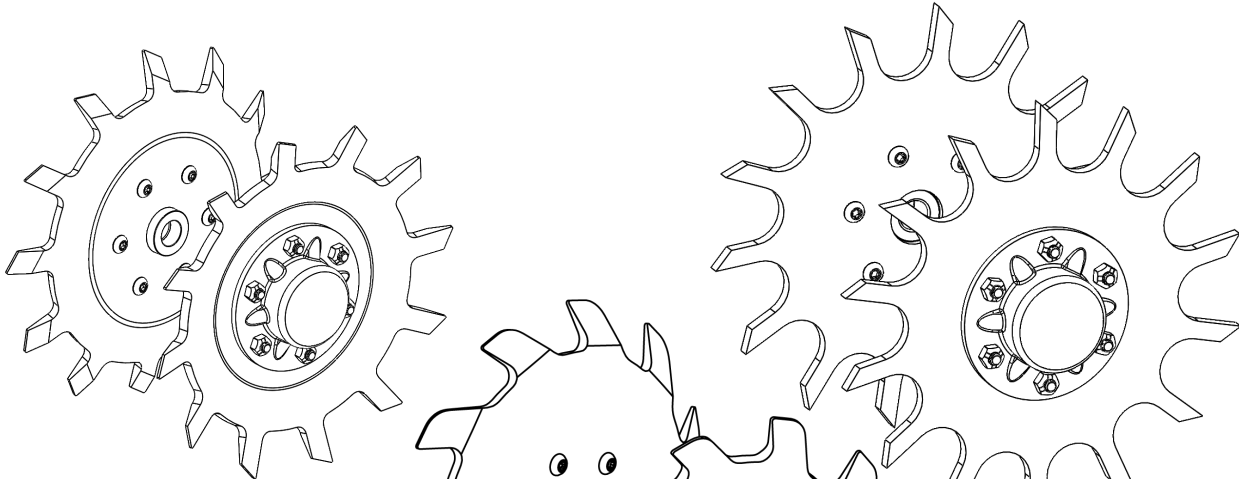


BSCW899_9ZC_9SC

FOR CNH 800, 900, 1200 & 2000 SERIES ROW UNITS

INSTALLATION INSTRUCTIONS



**BSCW9SC Cupped
Spading Wheels
(900575-LH, 900576
-RH)**

**BSCW9ZC Cupped
Razor Wheels
(900471-RH,
900470-LH)**

**BSCW899 Spike
Wheels (900439-LH,
900438-RH)**



Martin Planter Attachments

Martin Industries LLC

206 Elk Fork Road

Elkton, KY 42220

Telephone: 270-265-5817

E-Mail: martin@martintill.com

www.martintill.com

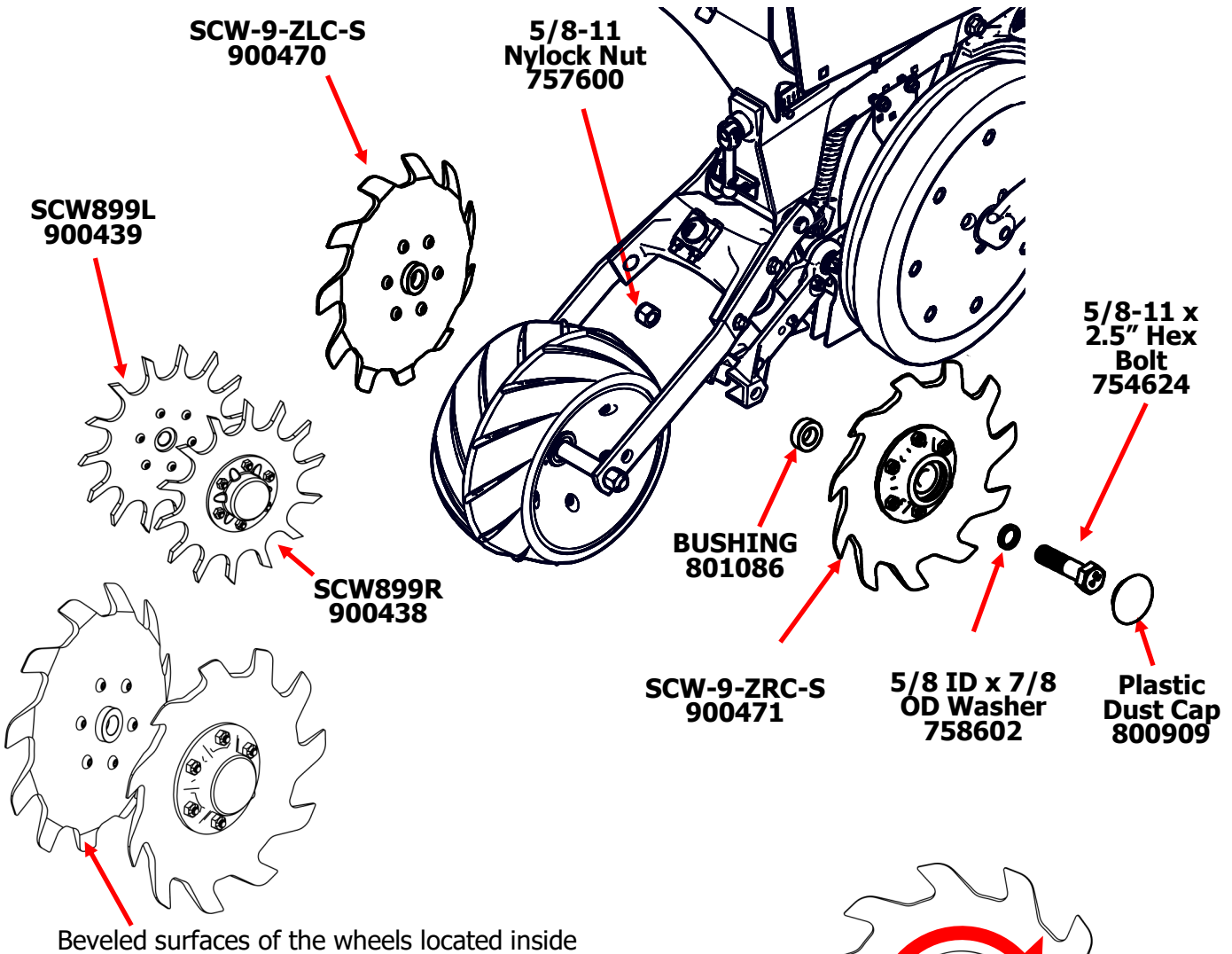


INSTALLING BSCW899-9ZC-9SC WHEELS (800-1200 Series)

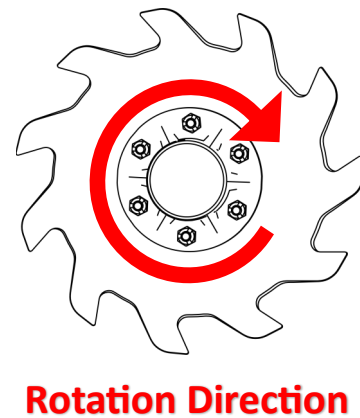
- 1) Remove the existing wheels by removing the dust cover and unthreading existing hardware.
- 2) Remove the bolt and detach the assembly.
- 3) Pass the provided 5/8-11 x 2 1/2 bolt through the 5/8 ID x 7/8 OD washer as shown below.
- 4) Pass the bolt through the hub and add one 801086 Spacer (Optional). To adjust wheels closer to center of row, remove the 801086 Spacer and install Bearing directly to Closing Frame.
- 5) Attach the assembly to the planter with provided 5/8-11 Nylock Nut. Tighten the bolt to 112 ft-lbs. Be sure rotation direction is as shown in the pictures for both wheels. Use the wheel on the opposite side if the rotation direction is opposite.
- 6) With wheel installed to Closing arm, install Plastic dust cap 800909 to outside of hub as shown below using a rubber mallet.

For Beveled and/or Cupped Wheels, make sure that the beveled side of both wheels are located to the inside and the Cupped side is facing outward from the Closing arm as shown.

Note: Closing wheel pressure may have to be varied to obtain desired results.



Hardware Provided	
1) 5/8 X 2 1/2 Hex Bolt (754624)	Qty 2
2) 5/8\" ID x 7/8\" OD Washer (758602)	Qty 2
3) Spacer (801086)	Qty 2
4) Plastic Dust Cap (800909)	Qty 2
5) 5/8\" Nylock Nut (787600)	Qty 2

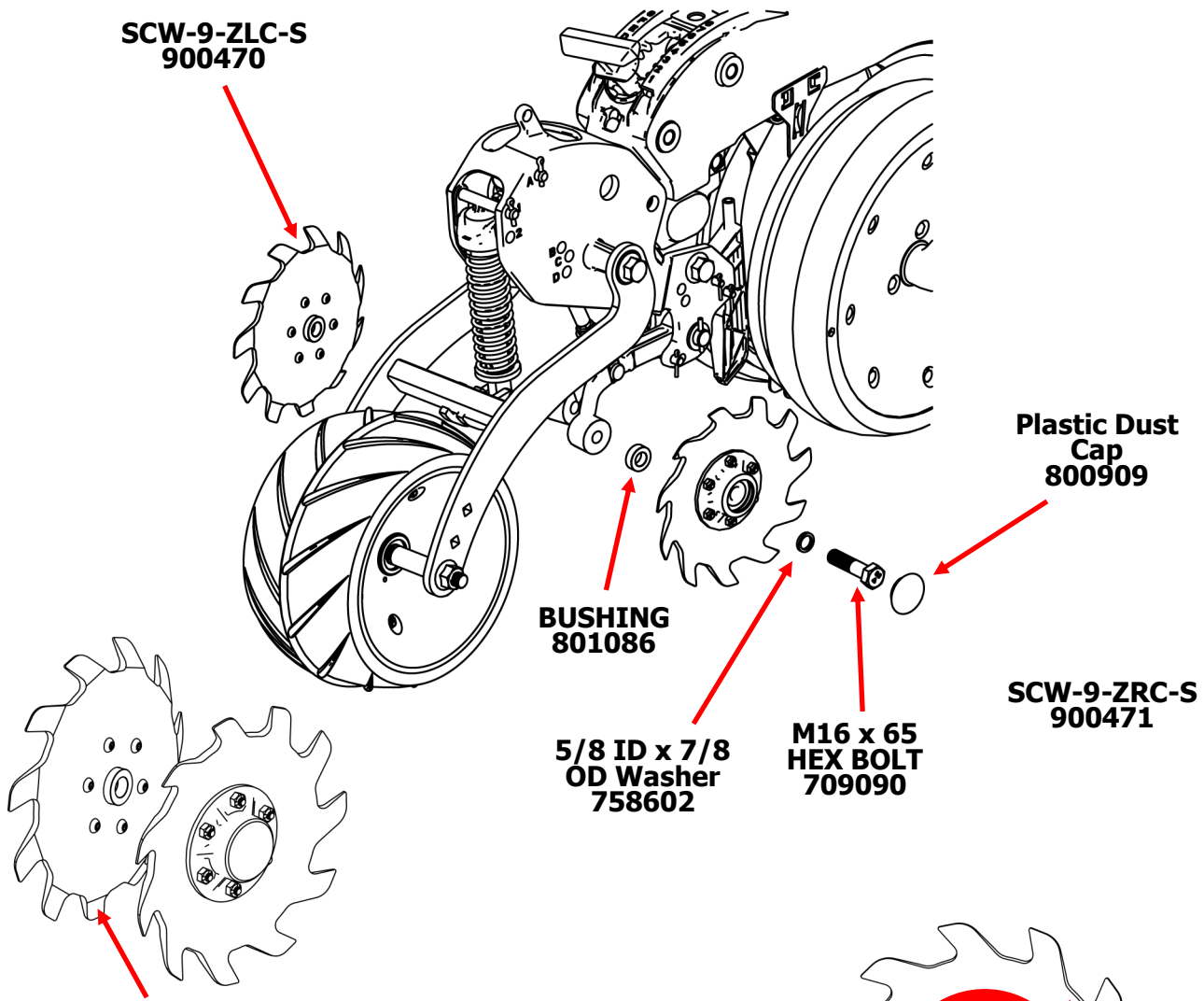


INSTALLING BSCW899-9ZC-9SC WHEELS (2000 Series)

- 1) Remove the existing wheels by removing the dust cover and unthreading existing hardware.
- 2) Remove the bolt and detach the assembly.
- 3) Pass the new provided M16-2 x 65mm bolt through the 5/8 ID x 7/8 OD washer as shown below.
- 4) Pass the bolt through the hub and add one 801086 Spacer. To adjust wheels closer to center of row, remove the 801086 Spacer and install Bearing directly to Closing Frame.
- 5) Attach the assembly to the planter. Tighten the bolt to 112 ft-lbs. Be sure rotation direction is as shown in the pictures for both wheels. Use the wheel on the opposite side if the rotation direction is opposite.
- 6) With wheel installed to Closing arm, install Plastic dust cap 800909 to outside of hub as shown below using a rubber mallet.

For Beveled and/or Cupped Wheels, make sure that the beveled side of both wheels are located to the inside and the Cupped side is facing outward from the Closing arm as shown.

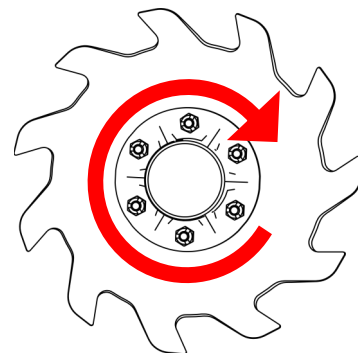
Note: Closing wheel pressure may have to be varied to obtain desired results.



Beveled surfaces of the wheels located inside

Hardware Provided

- | | |
|--------------------------------------|-------|
| 1) M16 X 65 Hex Bolt (709090) | Qty 2 |
| 2) 5/8" ID x 7/8" OD Washer (758602) | Qty 2 |
| 3) Spacer (801086) | Qty 2 |
| 4) Plastic Dust Cap (800909) | Qty 2 |



Rotation Direction



The most trusted name in no-till
Established 1991

Martin Industries LLC

206 Elk Fork Road

Elkton, KY 42220

Telephone: 270-265-5817

E-Mail: martin@martintill.com

www.martintill.com