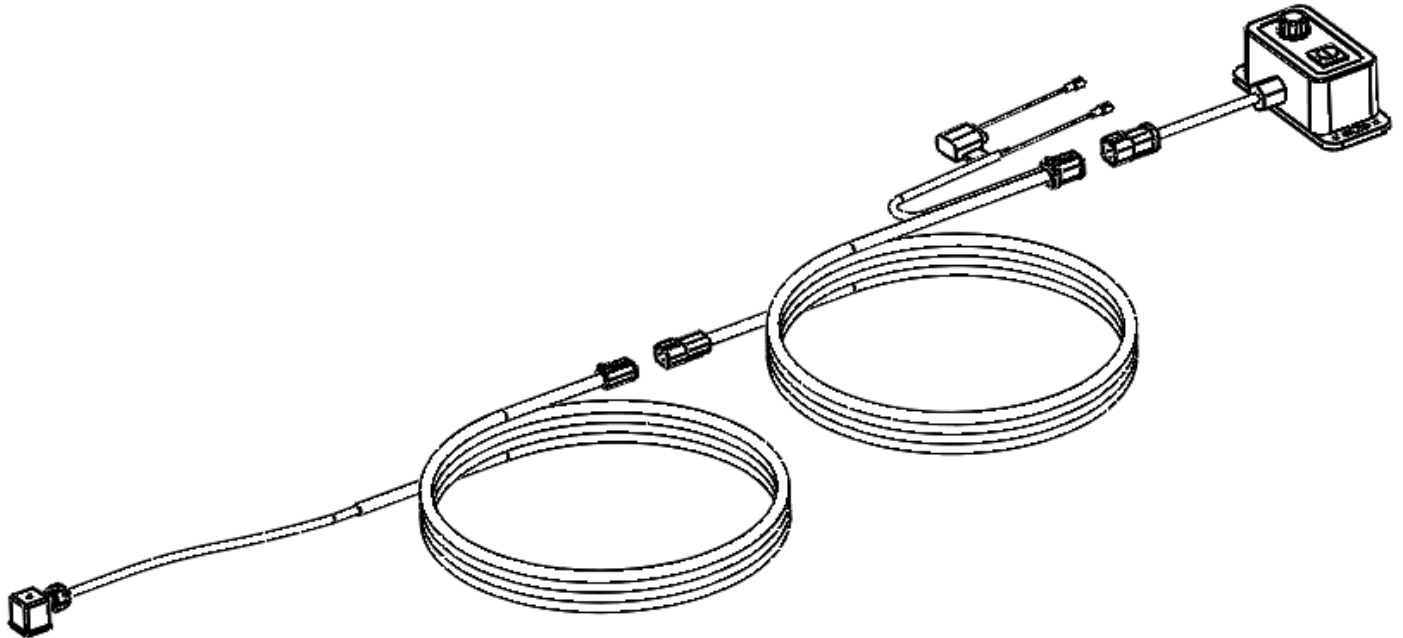


**900440 Electrical**  
**WEIGHT TRANSFER SYSTEM CONTROL**  
**INSTALLATION INSTRUCTIONS**



**MARTIN PLANTER ATTACHMENTS**

**Martin Industries LLC**

206 Elk Fork Road

Elkton, KY 42220

Telephone: 270-265-5817

E-Mail: [martin@martintill.com](mailto:martin@martintill.com)

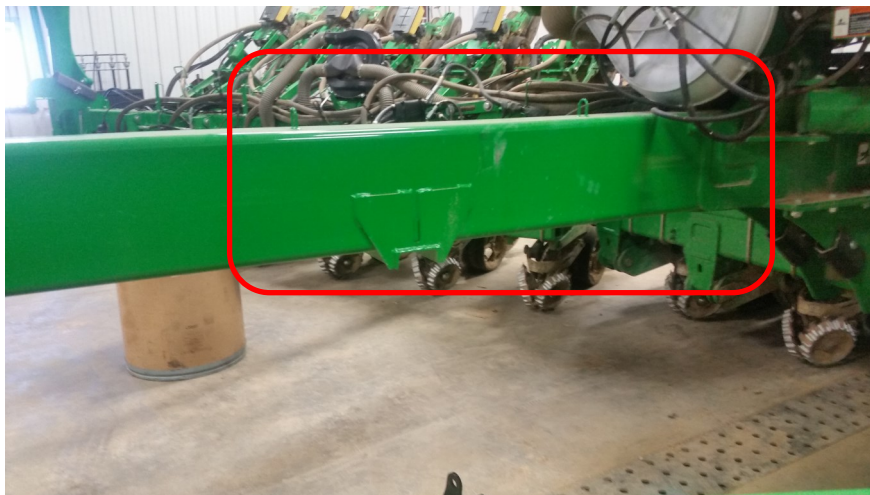
[www.martintill.com](http://www.martintill.com)

## **BEFORE INSTALLATION BEGINS EVALUTE POSSIBLE CLEARANCE ISSUES.**

It is important to verify that the planter does not have any installed accessories that may cause an interference problem when the planter is folded for transport. Mounting of liquid fertilizer tanks , air compressors, or other accessories along the center spine of the planter must be evaluated for interferences before installation and carefully confirmed after the initial installation upon the first time folding the planter. Every effort has been made to minimize the possibility of interferences, however any customizations or accessories mounted MUST be carefully evaluated by the installer to prevent the possibility of equipment damage.



**AREA OF CONCERN FOR INTERFERENCE/VALVE MOUNTING AND HOSES CLEAR DURING CLOSING**



**AREA OF CONCERN FOR INTERFERENCE/CLEARANCE ISSUES TONGUE MOUNTED TANKS**

## WHEN THE WEIGHT TRANSFER SYSTEM IS ACTIVE



**Please note that it is important to ensure that all hydraulic returns are unobstructed.**

**The weight transfer system is active while in plant mode only. The frame pressure at the CCS fan turns on and off with the CCS fan on a John Deere. CIH maintains pressure at the fan, so the operator needs to turn the system on an off manually. Attach hydraulic supply line just ahead of the fan speed control valve and the return just after the oil cooler.**

**Important:** The operator needs to turn the system on an off manually.

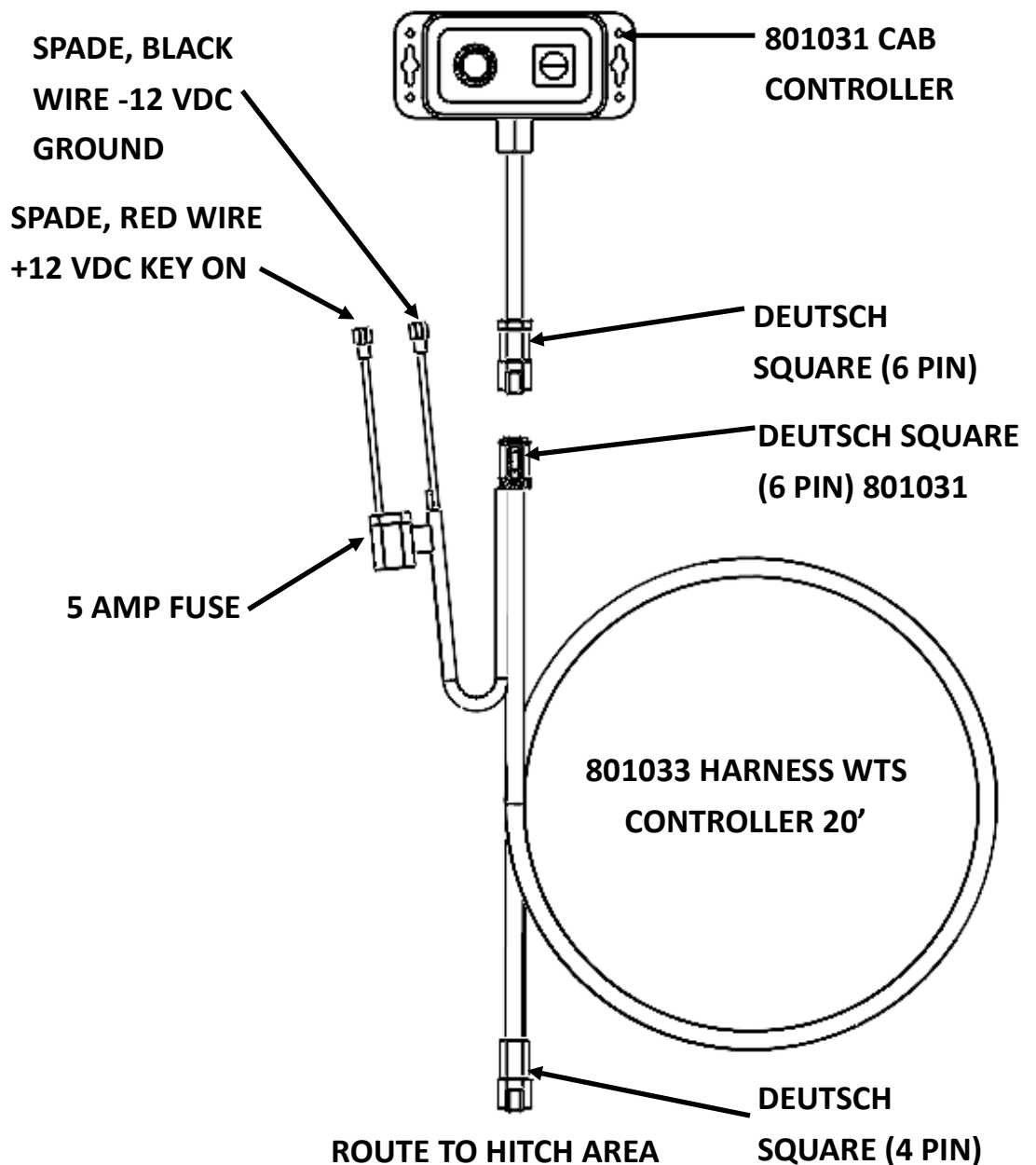
**Note:** Do not connect the return to the fan drain as this may cause seal damage.

# CONTROLLER AND HARNESS

## CAB connections

Cab controller can easily mount any where in the cab. The harness that plugs into the controller splits, into separate cables on the controller end. The controller end has a square Deutsch (6 pin) and a lead with two spade connectors. The planter end of the harness has a Deutsch (4 Pin)

1. The Square Deutsch (4 Pin) goes out to the hitch area to allow quick disconnect from the planter.



# HARNESS OVERVIEW



801031 CONTROLLER



SPADE CONNECTORS



CONNECTION AT HITCH  
DEUTSCH 4 PIN DT04-4P  
AND DT06-4S



DIN CONNECTION AT VALVE  
MOLEX 1212010030

TRACTOR CAB



DT04-6P AND DT06-6S  
DEUTSCH 6 PIN



801033 20' HARNESS



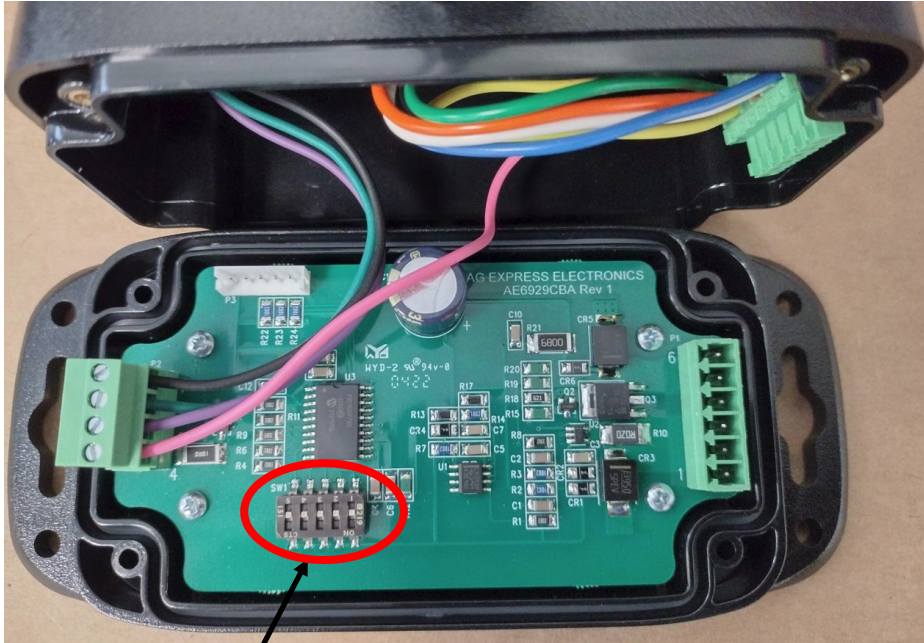
801032 50' HARNESS

PLANTER FRAME

# CONTROLLER DIP SWITCHES AND LED

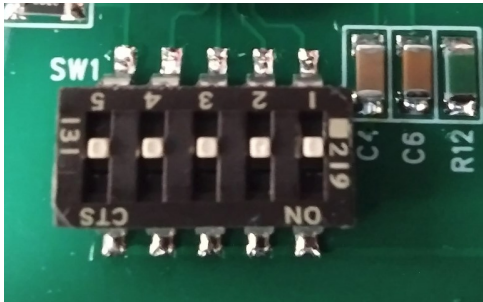
OPTION 1: ALL DIP SWITCHES IN THE OFF POSITION

OPTION 2: SET DIP SWITCH 1 TO THE ON POSITION



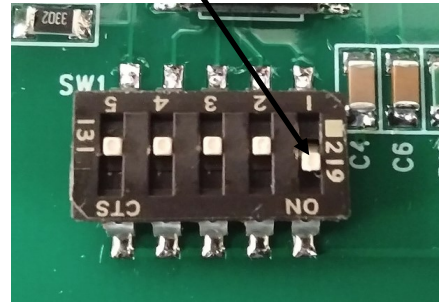
DIP SWITCHES ON CIRCUIT BOARD

EXAMPLE: DIP SWITCH IN THE WRONG POSITION



CORRECT DIP SWITCH SETTINGS:

ALL DIP SWITCHES IN THE OFF POSITION



## LED STATUS:

SOLID RED = NORMAL OPERATION

FAST PULSE = IMPLEMENT SWITCH DISABLE

1 PULSE/PAUSE = LOW CURRENT TO SOLENIOD

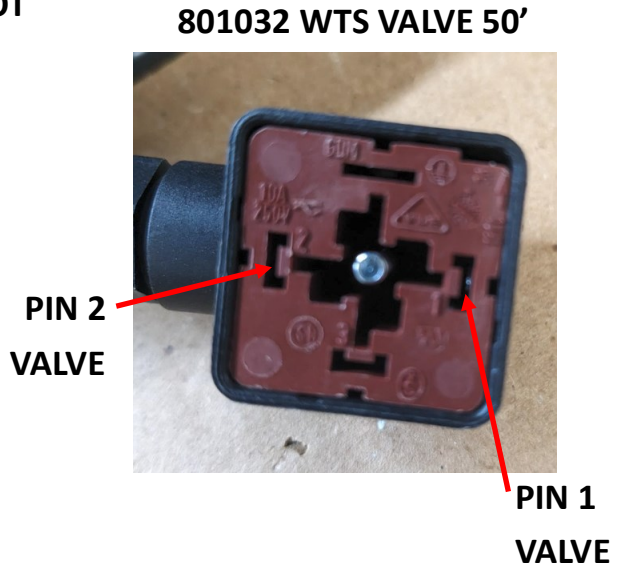
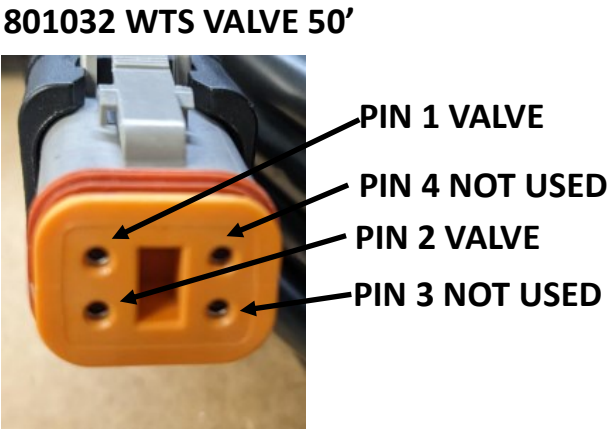
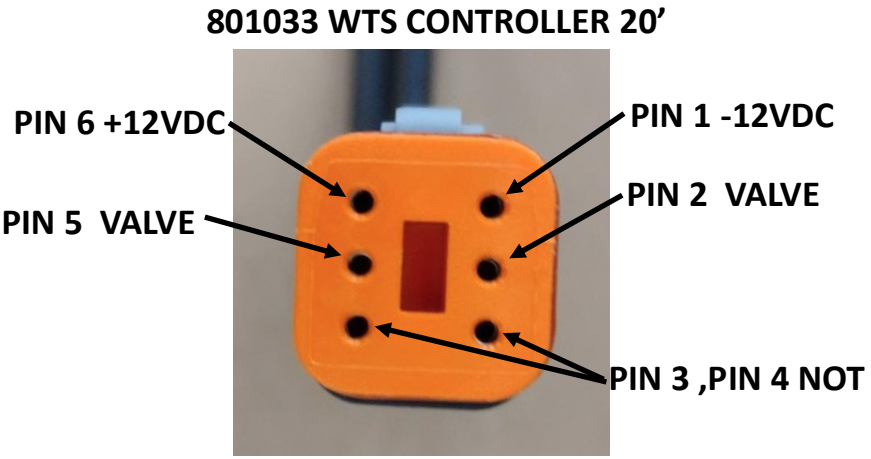
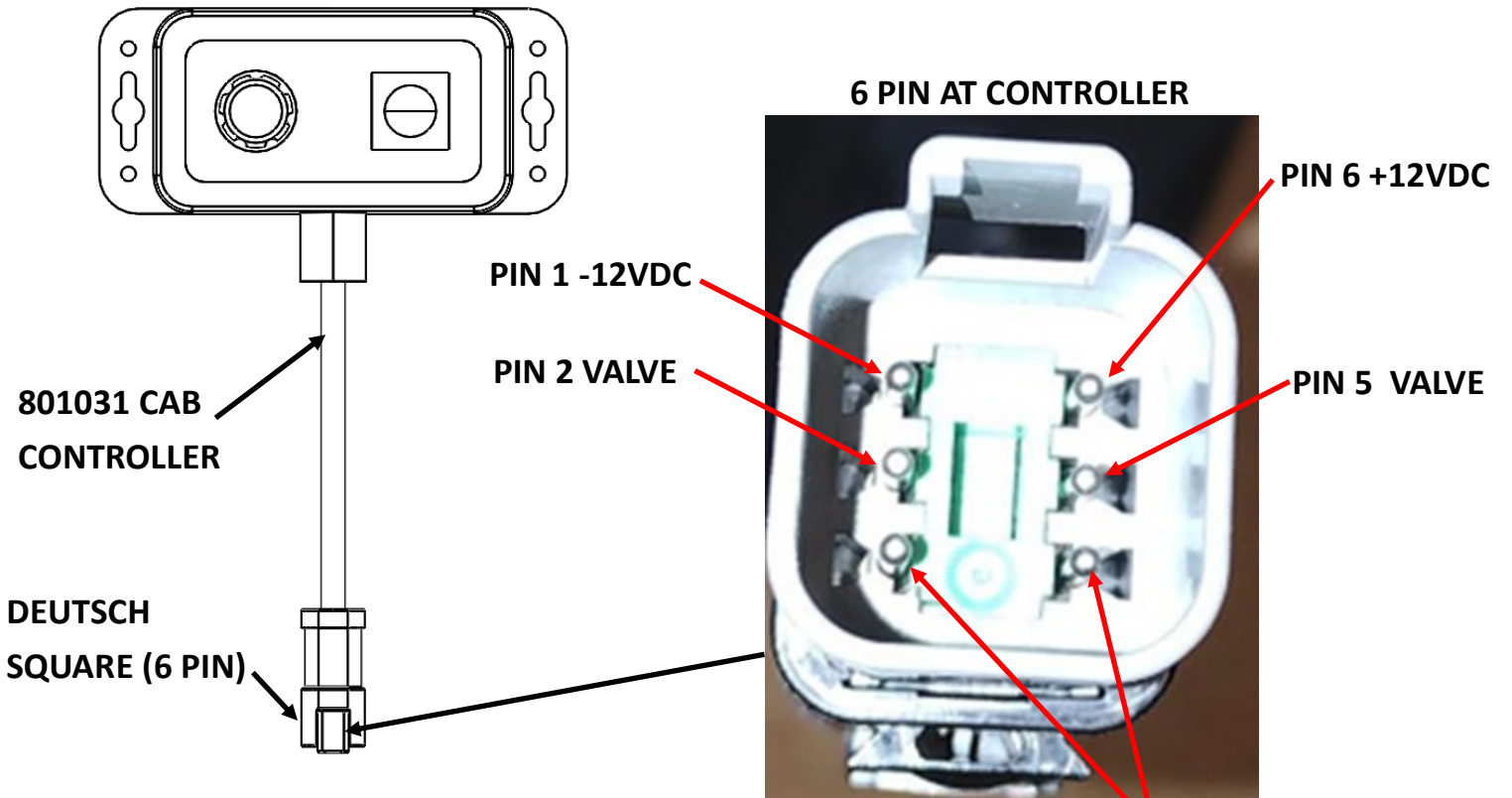
2 PULSE/PAUSE = HIGH CURRENT TO SOLENIOD

3 PULES/PAUSE = LOW SUPPLY VOLTAGE CYCLE POWER SWITCH TO CLEAR FAULT



LED INDICATOR

# HARNES PINOUTS





**The most trusted name in no-till**  
**Established 1991**

**Martin Industries LLC**

206 Elk Fork Road

Elkton, KY 42220

Telephone: 270-265-5817

E-Mail: [martin@martintill.com](mailto:martin@martintill.com)