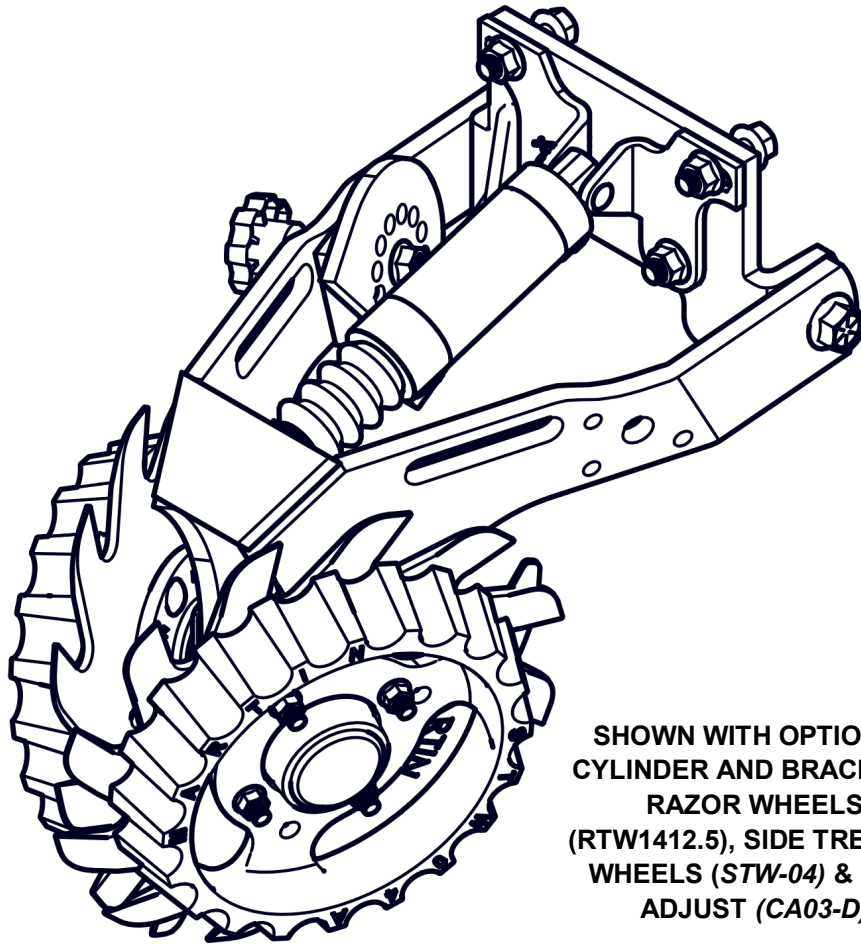


**BD/BK**  
**BCIH**

# **BA1345 ROW CLEANER**

## **INSTALLATION INSTRUCTIONS**



SHOWN WITH OPTIONAL  
CYLINDER AND BRACKETS,  
RAZOR WHEELS  
(RTW1412.5), SIDE TREADER  
WHEELS (STW-04) & CAM  
ADJUST (CA03-D)



**Martin Industries LLC**

206 Elk Fork Road

Elkton, KY 42220

Telephone: 270-265-5817

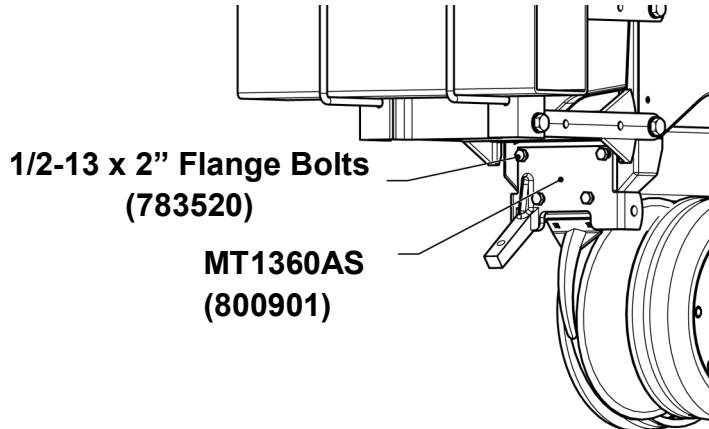
E-Mail: martin@martintill.com

www.martintill.com

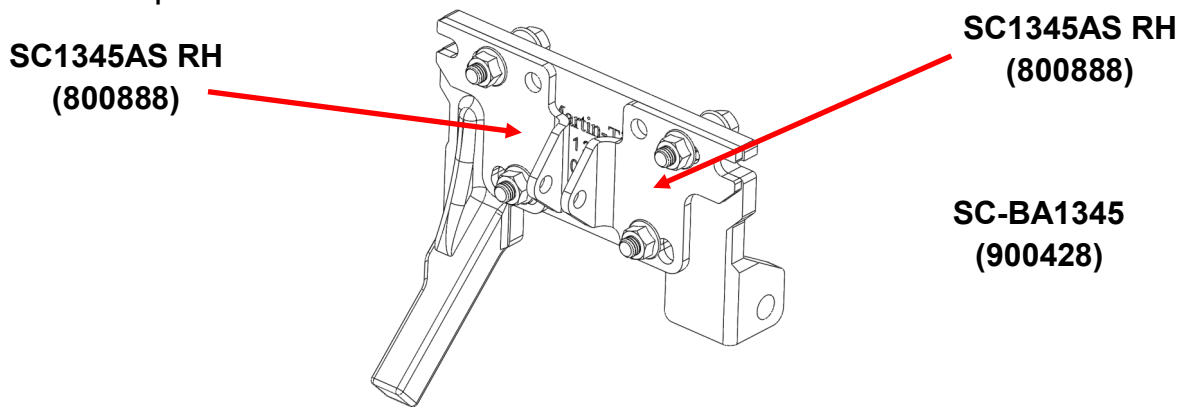


## STEP 1 : ATTACH THE MOUNT TO THE PLANTER

Using four 1/2" X 2" bolts, attach the mount (MT1360AS/800901) to the planter face plate, and torque mounting nuts to 57 ft-lbs.



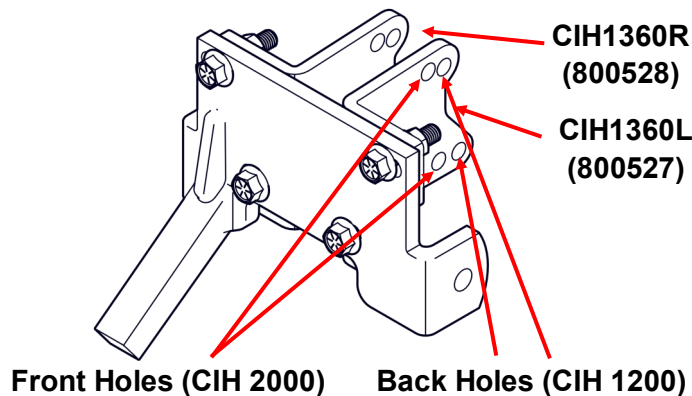
If you purchased the optional Smart Clean System, install the Smart Clean cylinder top brackets (900428 Kit) on the mount (as shown in the picture) before attaching the mount to the planter.



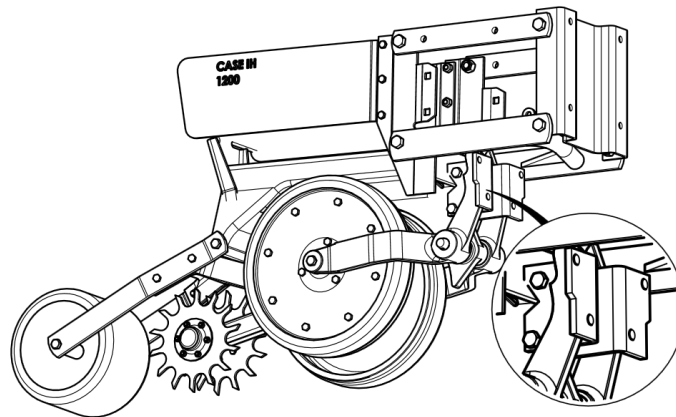
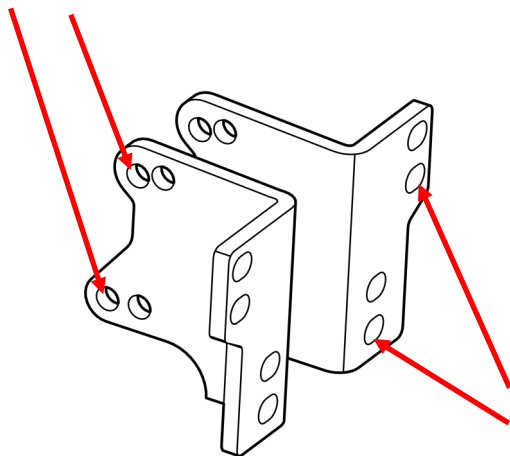
## FOR CASEIH 1200 SERIES PLANTERS (BCIH1345)

Attach the Right and Left L shaped brackets (CIH1360R & CIH1360L) using provided two 1/2" X 3 1/2" bolts and nuts as shown in the picture. Torque to 80 ft-lbs. Using four 1/2" X 2" Flange bolts, attach the mount to the L shape brackets, and torque mounting nuts to 57 ft-lbs.

For CIH 1200 Series, use Back holes. If mounting on a CIH 2000 without HD Adaptor, use Front Holes



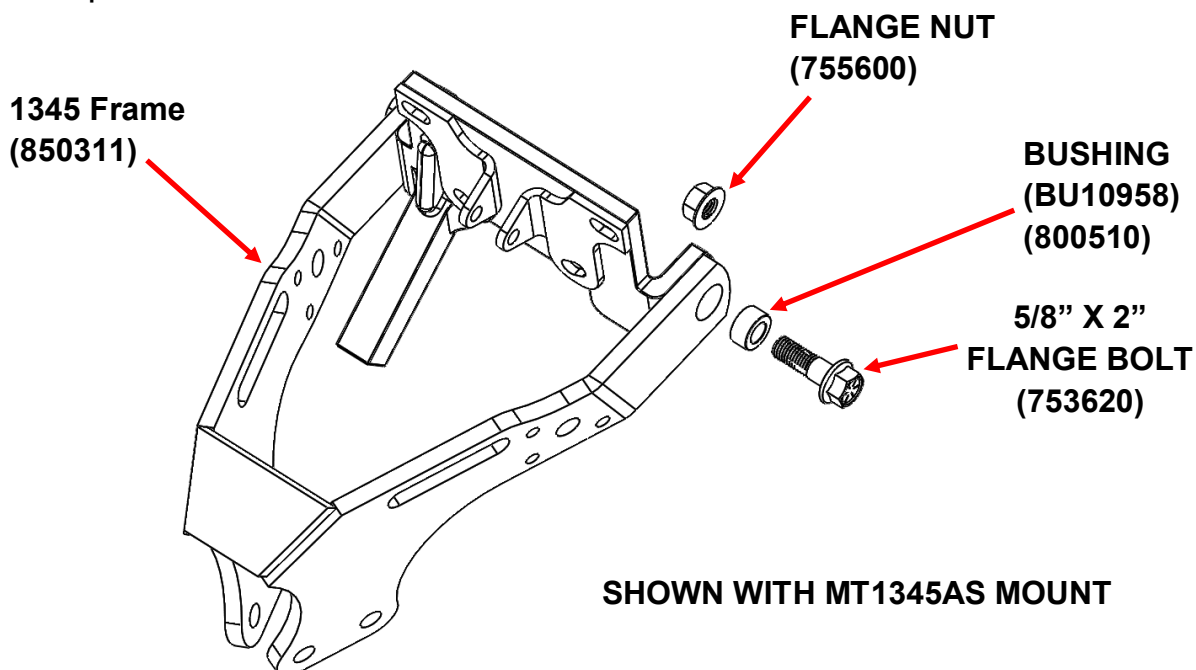
**Back Holes For  
CIH 1200 Series  
Planters**



**These bottom set of mounting holes are not recommended on 1360 Floating Row Cleaners or 1345 Narrow Row Cleaners (ACCR1360/45 on CIH 1200 Series Only)**

## **STEP 2: ATTACH 1360 FRAME ASSEMBLY TO THE MOUNT**

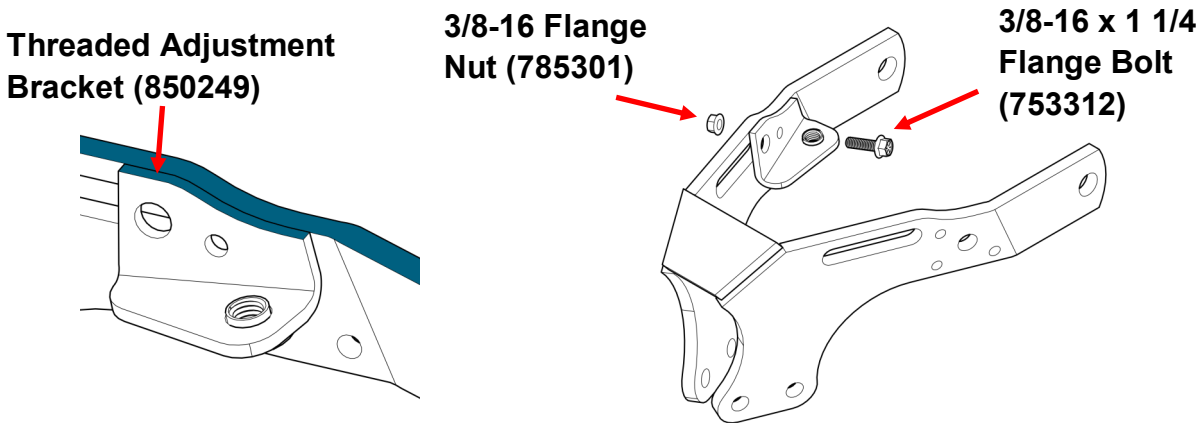
1. Place the bushings (BU10958) inside the frame's arms pin point holes.
2. Align the holes in the mount and the frame assembly. Insert the 5/8" x 2" Flange Bolts from the outside and place nuts on from inside.
3. Tighten the bolts to 112 ft-lbs. Check after first day of use.
4. Check to ensure the frame is not binding on the mounting bracket and is free to float up and down.



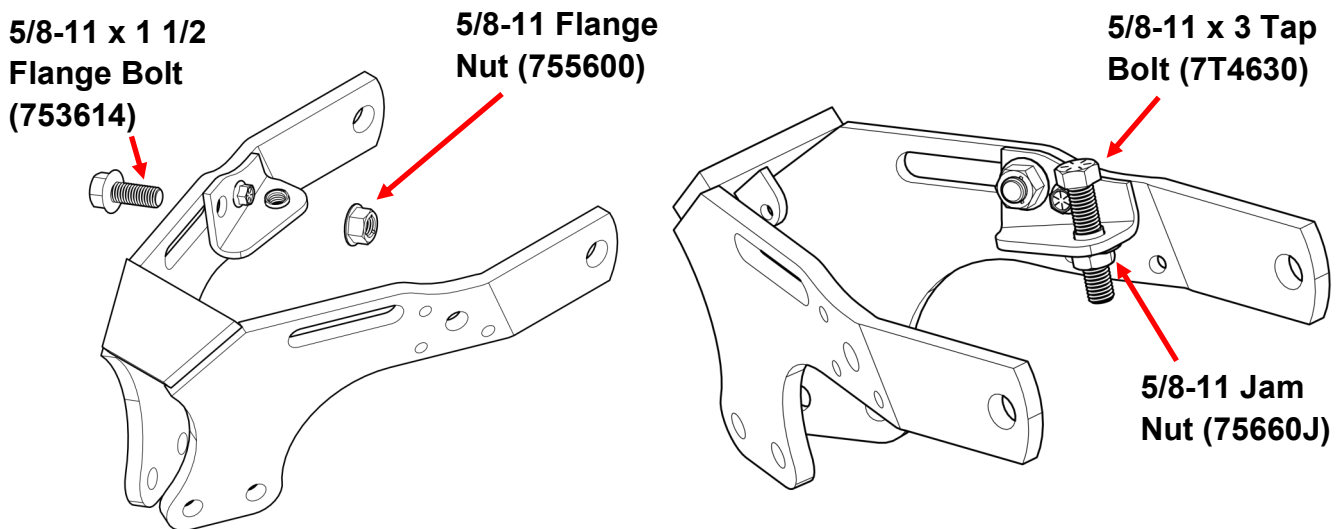
### STEP 3 : INSTALL THREADED ADJUSTMENT ASSEMBLY

1. Line up the top surface and curve of the SB02 Bracket with the Frame as shown below.
2. With the top lined up, install provided 3/8-16 x 1 1/4 Flange Bolt (753312) from inside the 1345 Frame as shown above and install 3/8-16 Flange nut to outside of frame.

**Do not fully tighten the nut.**



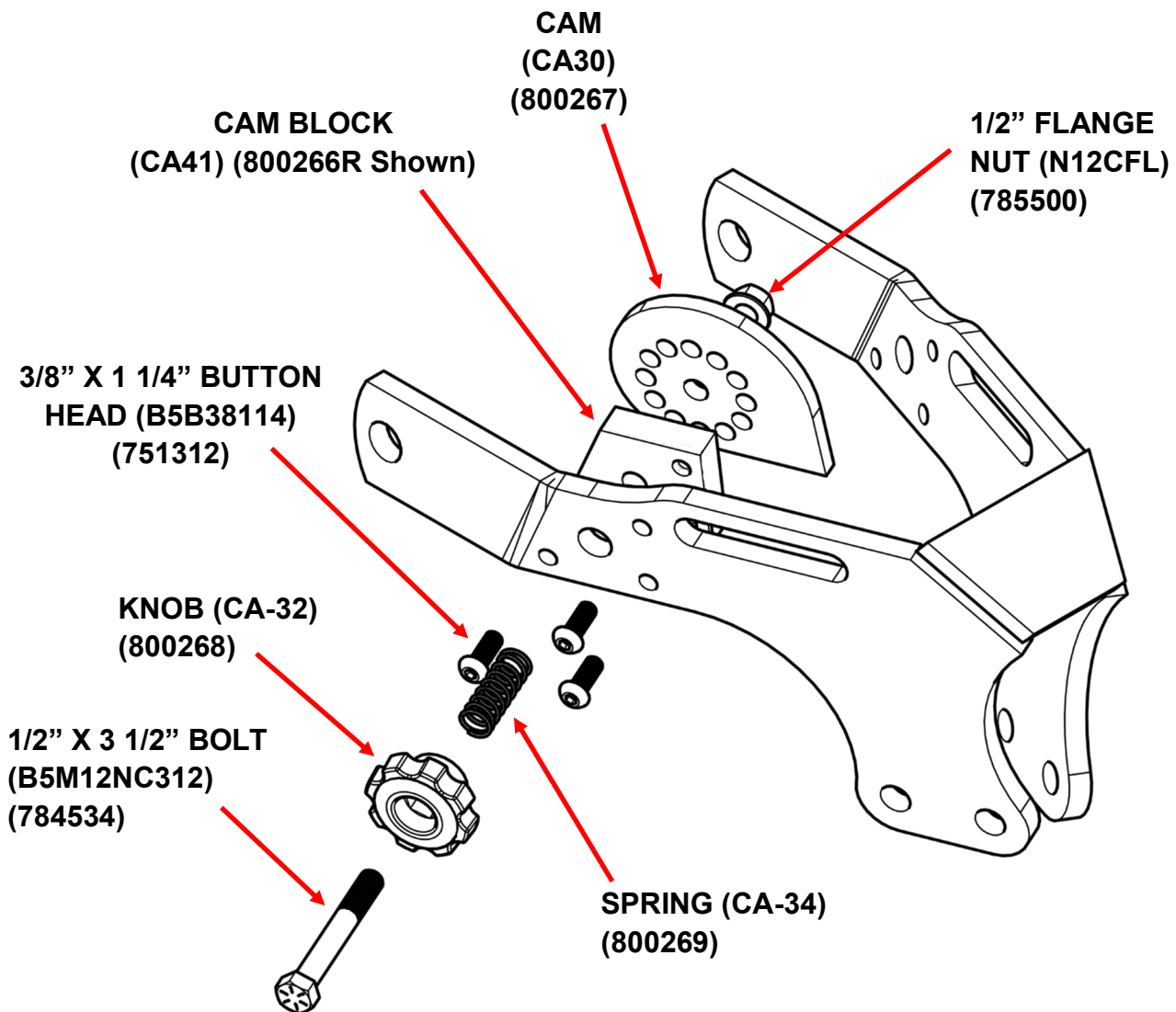
3. Install 5/8-11 x 1 1/2 Flange Bolt (753614) from outside of frame as shown below through handle slot. Tighten down fully with 5/8-11 Flange Lock Nut (755600).
4. Fully tighten down 3/8-16 Flange nut from Step 2.
5. Thread 5/8-11 Tap Bolt (7T4630) through weld nut from the top and install jam nut to tap bolt from under the bracket as shown above.
6. Adjust tap bolt and jam nut to your desired depth for the row cleaner.



**NOTE: IF USING THE CAM ADJUST OPTION SKIP THIS STEP AND PROCEED TO STEP 4**

## STEP 4 : INSTALL OPTIONAL CAM ADJUSTMENT ASSEMBLY

1. Mount the cam block to the frame using the three 3/8" button head bolts.
2. Slide the 1/2" x 4" bolt through the knob, spring, and support block and thread it into the cam.
3. Tighten the bolt until the cam is directly adjacent the support block but still loose enough to be disengaged from the pin by pushing on the knob.
4. Install the 1/2" nut on the end of the bolt and tighten securely against the cam. Torque to 57 ft-lbs.



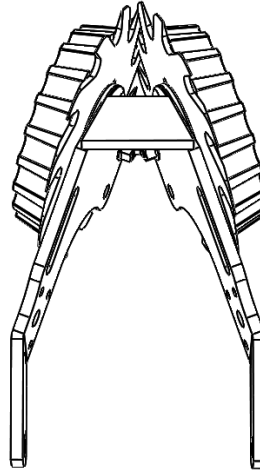
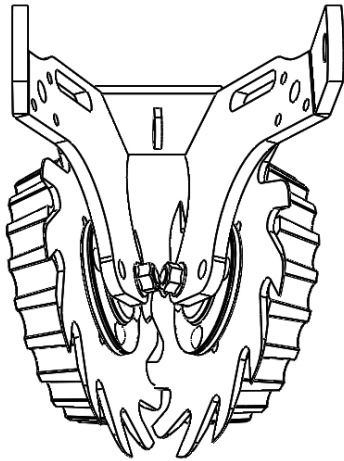
## STEP 5 : DETERMINE THE BEST WHEEL CONFIGURATION FOR YOUR SOIL CONDITIONS

### OPTION A: INTERSECTED

(Both wheels in front hole)

Both wheels forward provides maximum cleaning effect. The interlocked wheels till the middle of the seed row.

**Note: Rows behind Transport wheels will need to run with both Row Cleaner wheels in back holes (retracted position). Other Options include using set back brackets or using extended linkage to keep from hitting the transport wheels.**

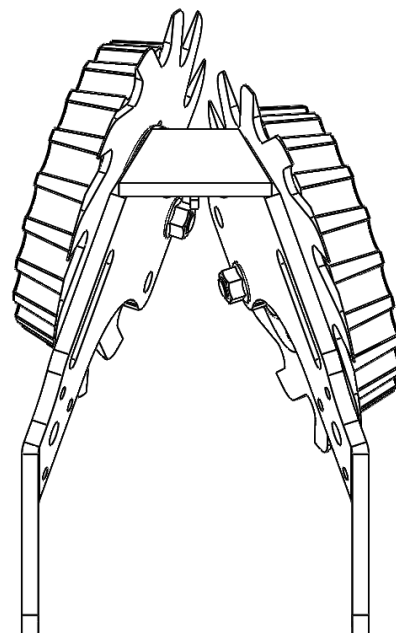
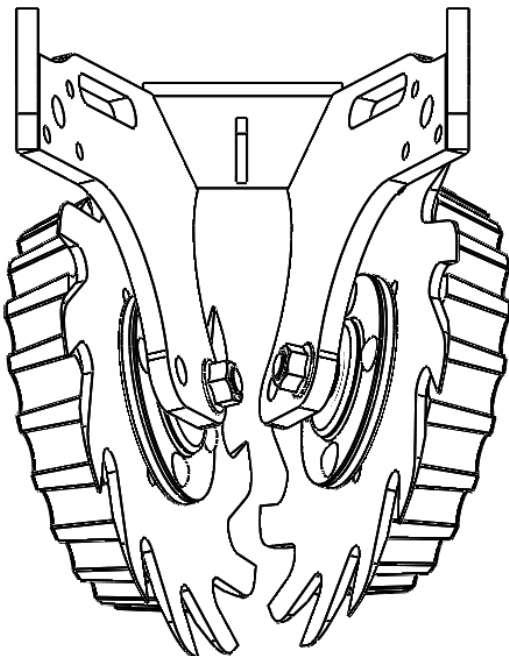


### OPTION B: OFFSET

(One wheel in front hole and one wheel in rear hole)

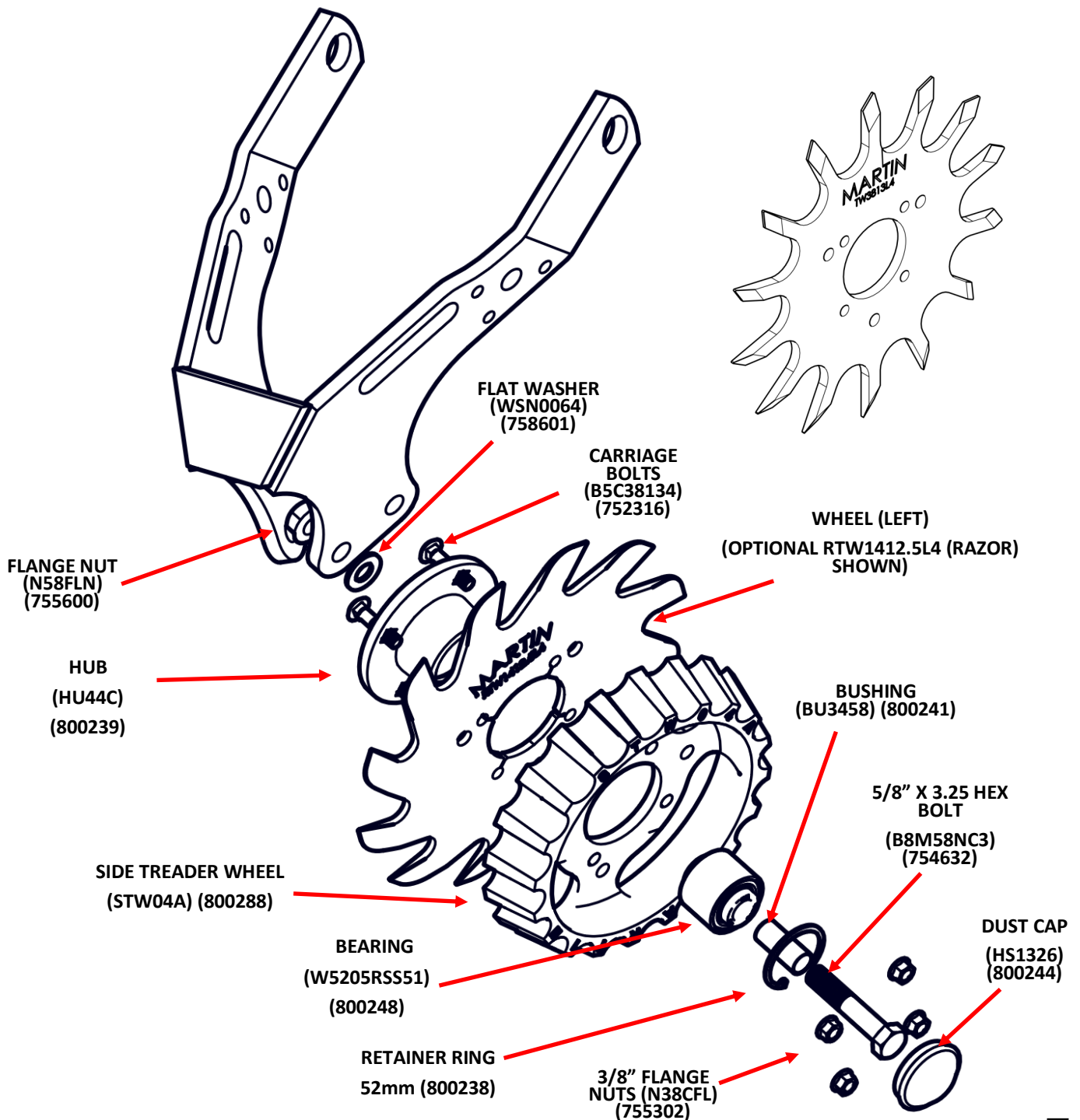
The staggered configuration allows the wheels to turn more easily in loose soil.

With this configuration, we suggest running the left wheels in the rear hole on the half of the planter and the right wheels in the rear hole on the other half of the planter (when viewed from behind).



## STEP 6: INSTALL WHEEL ASSEMBLIES

1. Secure the hub to the frame with the 5/8" X 3.25" Hex bolt, washer and nut. Using a torque-wrench, tighten to 116 ft-lbs. Install the dust cap.
2. Install the wheel (part # to the outside) and side treader wheel on the hub, using the four carriage bolts and flange nuts. Torque to 23 ft-lbs. Re-tighten after first day's use.
3. The wheel marked TW3813L4 is for use on the left side of the frame (as viewed from behind the machine). Repeat for opposite side.



## STEP 7: INSTALL OPTIONAL DEFLECTOR (SCRAPER)

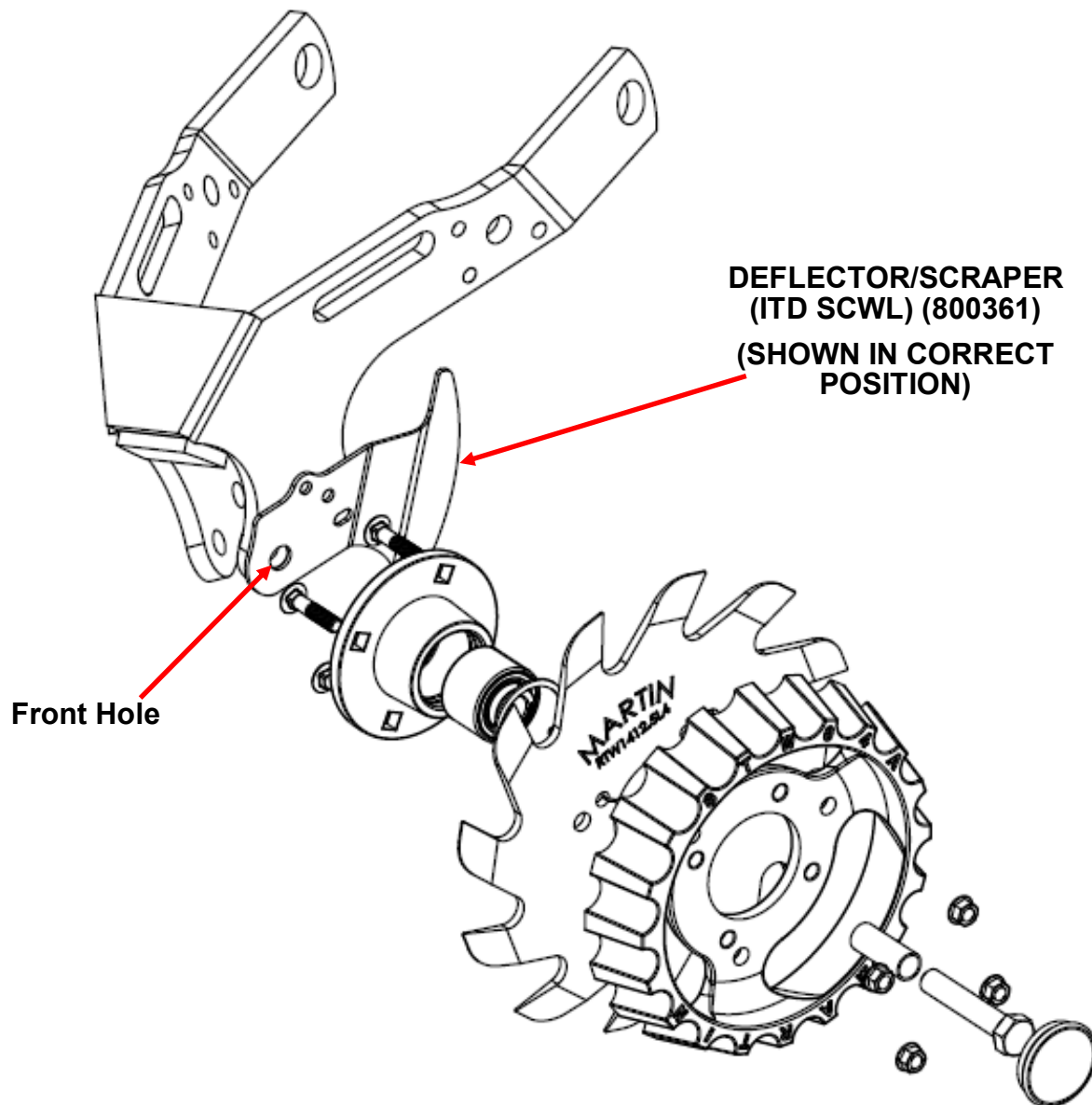
**NOTE:** The Deflector (Scraper) is recommended when operating in wetter conditions, or damp stringy residue, to reduce wrapping.

**NOTE:** The Deflector (Scraper) comes in pair of left and right for left and right wheels.

### Intersected Configuration ( Wheel in front hole)

1. Place the deflector (Scraper) on the back of the assembled wheel unit (previously assembled in step 6) as shown here and pass the hex bolt (754632) through the wheel assembly and the deflector and attach the flange nut (755600) hand tighten and locate the deflector as shown and torque the hex bolt to 116 ft-lbs being careful not to allow the deflector to rotate during bolt tightening.
2. The wheel marked TW3813L4 (Or RTW1412.5L4 for the Razor wheel) is for use on the left side of the frame (as viewed from behind the machine). Repeat for opposite side.

NOTE: When the deflector (scraper) is to be installed the washer (758601) is NOT used

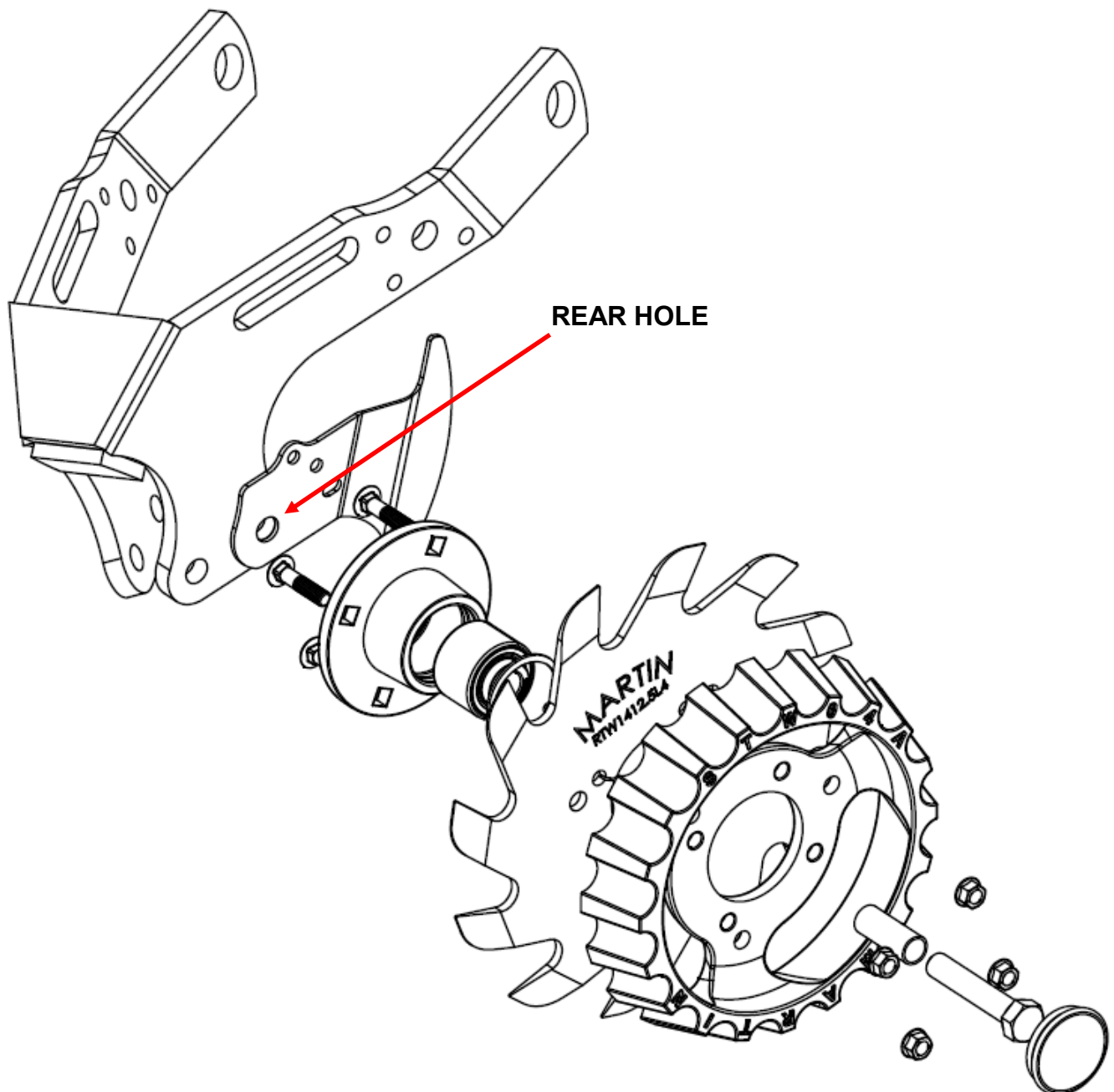




## Offset Configuration ( Wheel in rear hole)

1. Place the deflector (scraper) on the back of the assembled wheel unit (previously assembled in step 6) as shown here and pass the hex bolt (754632) through the wheel assembly and the deflector using the rear hole in the frame unit and attach the flange nut (755600) hand tighten and locate the deflector (scraper) as shown and torque the flange bolt to 116 ft-lbs being careful not to allow the deflector to rotate during bolt tightening.
2. The wheel marked TW3813L4 (Or RTW1412.5L4 for the Razor wheel) is for use on the left side of the frame (as viewed from behind the machine). Repeat for opposite side.

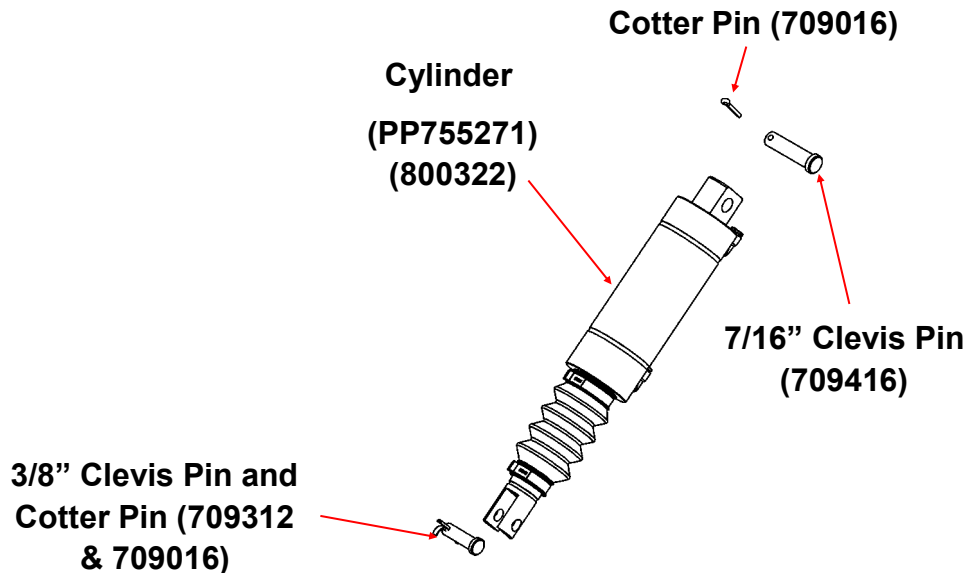
NOTE: When the deflector (scraper) is used the washer (758601) is NOT used



## STEP 7 : INSTALL THE OPTIONAL SMARTCLEAN CYLINDER

Install the SmartClean cylinder between the top and bottom brackets. Use thicker (7/16") Pin on the top brackets and thinner (3/8") pin on the bottom bracket as shown in the picture below.

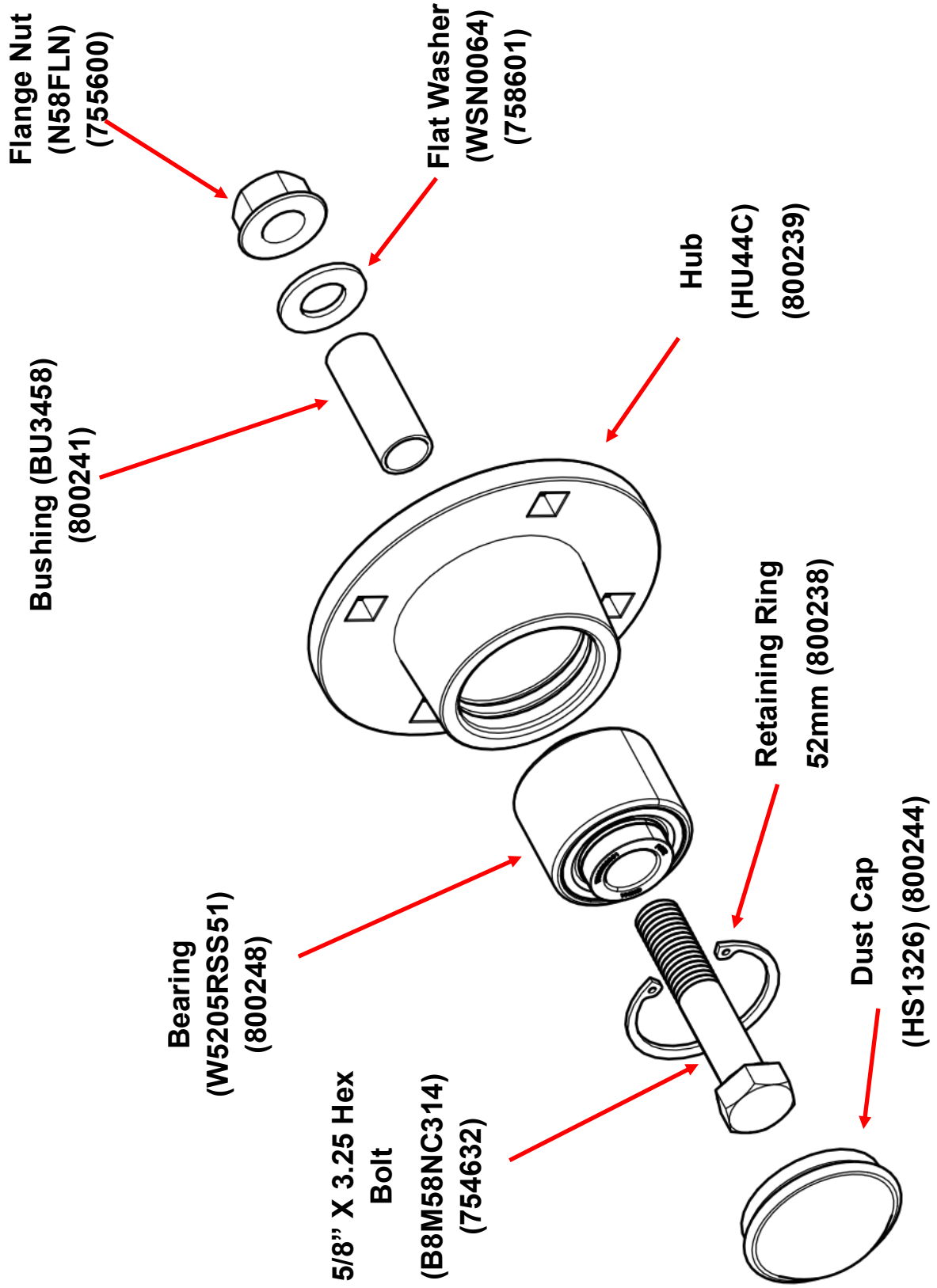
**NOTE:** Cylinder may be installed with elbow valves in either up or down orientation, depending on user preference.



### Note:

It is very important to limit the row cleaner down travel by threaded or cam adjustment assembly to prevent the air cylinder from extending fully by setting stop bolt or cam to catch the row cleaner just before the cylinder reaches the end of its stroke. Failure to do so will destroy the cylinder prematurely.

# PARTS LIST FOR 1345 C-HUB ASSEMBLY (HU44C) (900101)





**The most trusted name in no-till**  
**Established 1991**

**Martin Industries LLC**  
206 Elk Fork Road  
Elkton, KY 42220  
Telephone: 270-265-5817  
E-Mail: [martin@martintill.com](mailto:martin@martintill.com)  
[www.martintill.com](http://www.martintill.com)